

BFP Rabbit pAb

CatalogNo: YN5660

| Key Features

Host Species

- Rabbit

Reactivity

- Speciesindependent

Applications

- WB

| Recommended Dilution Ratios

WB 1:5000

| Storage

Storage*

-15°C to -25°C/1 year(Do not lower than -25°C)

Formulation

PBS, pH 7.4, containing 0.5%BSA, 0.02% sodium azide as Preservative and 50% Glycerol.

| Basic Information

Clonality

Polyclonal

| Immunogen Information

Immunogen

Recombinant Protein of BFP

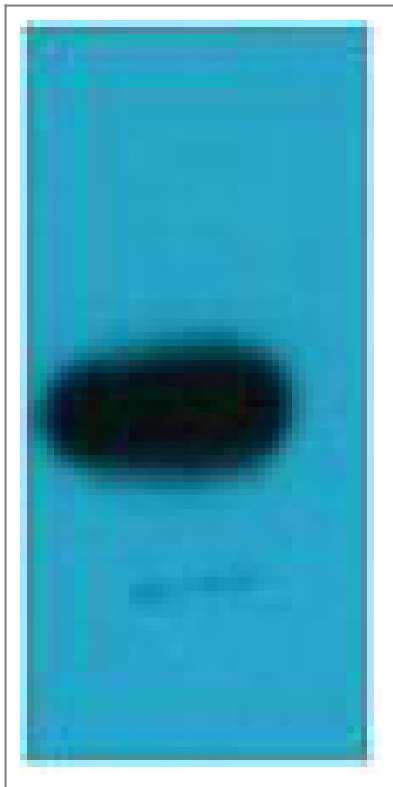
Specificity

The antibody detects EBFP & EBFP Tag protein.

| Target Information

Protein Name

| Validation Data



Western blot analysis of EBFP recombinant protein, diluted at 1:5000.
Secondary antibody(catalog#:RS0002) was diluted at 1:20000

| Contact information

Orders: order.cn@immunoway.com
Support: support.cn@immunoway.com
Telephone: 400-8787-807(China)
Website: <http://www.immunoway.com.cn>
Address: 2200 Ringwood Ave San Jose, CA 95131 USA



Please scan the QR code
to access additional
product information:
BFP Rabbit pAb

For Research Use Only. Not for Use in Diagnostic Procedures.

[Antibody](#) | [ELISA Kits](#) | [Protein](#) | [Reagents](#)