

## KCNN2 (SK2) Rabbit pAb

CatalogNo: YN5540

### | Key Features

#### Host Species

- Rabbit

#### Reactivity

- Human,Rat,Mouse

#### Applications

- WB,IHC,IF

#### MW

- 70,26kD (Observed)

#### Isotype

- IgG

### | Recommended Dilution Ratios

**WB 1:1000-2000**

**IHC 1:100-200**

**IF 1:50-200**

### | Storage

#### Storage\*

-15°C to -25°C/1 year(Do not lower than -25°C)

#### Formulation

Liquid in PBS containing 50% glycerol, 0.5% BSA and 0.02% sodium azide.

### | Basic Information

#### Clonality

Polyclonal

### | Immunogen Information

#### Immunogen

Synthetic Peptide of KCNN2 (SK2)

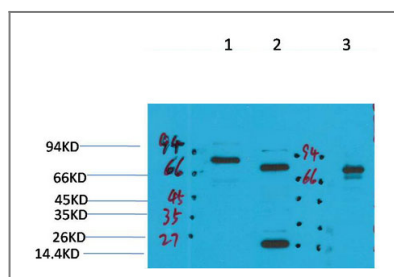
#### Specificity

KCNN2(SK2) protein(A244) detects endogenous levels of KCNN2(SK2)

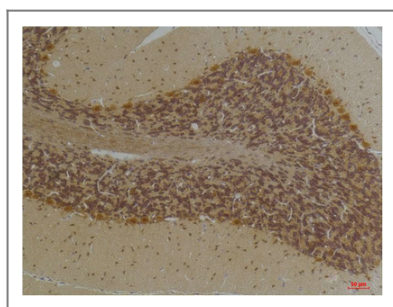
### | Target Information

Protein Name	Organism	Gene ID	UniProt ID
	Human	<a href="#">3781</a> ;	<a href="#">Q6PJI0</a> ;
<b>Cellular Localization</b>	smooth endoplasmic reticulum,plasma membrane,cell surface,integral component of membrane,Z disc,T-tubule,neuronal cell body,dendritic spine,		
<b>Tissue specificity</b>	Brain,Heart,Hippocampus,Myometrium,Skin,		
<b>Function</b>	Function:Forms a voltage-independent potassium channel activated by intracellular calcium. Activation is followed by membrane hyperpolarization. Thought to regulate neuronal excitability by contributing to the slow component of synaptic afterhyperpolarization. The channel is blocked by apamin.,similarity:Belongs to the potassium channel KCNN family.,subunit:Heterooligomer. The complex is composed of 4 channel subunits each of which binds to a calmodulin subunit which regulates the channel activity through calcium-binding.,tissue specificity:Widely expressed.,		

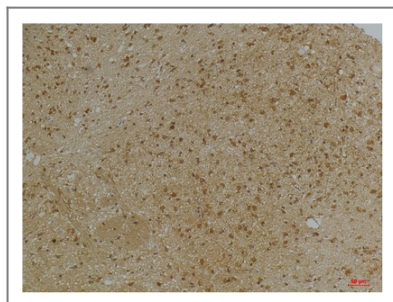
## Validation Data



Western blot analysis of 1) Rat BrainTissue, 2)Mouse Brain Tissue, 3) HepG2 with KCNN2(SK2) Rabbit pAb diluted at 1:2,000.



Immunohistochemical analysis of paraffin-embedded Human BrainTissue using KCNN2(SK2) Rabbit pAb diluted at 1:200.



Immunohistochemical analysis of paraffin-embedded Mouse BrainTissue using KCNN2(SK2) Rabbit pAb diluted at 1:200.

## Contact information

Orders: order.cn@immunoway.com  
Support: support.cn@immunoway.com  
Telephone: 400-8787-807(China)  
Website: <http://www.immunoway.com.cn>  
Address: 2200 Ringwood Ave San Jose, CA 95131 USA



Please scan the QR code  
to access additional  
product information:  
**KCNN2 (SK2) Rabbit  
pAb**

---

For Research Use Only. Not for Use in Diagnostic Procedures.

[Antibody](#) | [ELISA Kits](#) | [Protein](#) | [Reagents](#)