

KCNN3 (SK3) Rabbit pAb

CatalogNo: YN5539

Key Features

Host Species

- Rabbit

Reactivity

- Human,Rat

Applications

- IHC,IF

MW

- 82kD (Observed)

Isotype

- IgG

Recommended Dilution Ratios

IHC 1:100-200

IF 1:50-200

Storage

Storage*

-15°C to -25°C/1 year(Do not lower than -25°C)

Formulation

Liquid in PBS containing 50% glycerol, 0.5% BSA and 0.02% sodium azide.

Basic Information

Clonality

Polyclonal

Immunogen Information

Immunogen

Synthetic Peptide of KCNN3 (SK3) AA range: 161-211

Specificity

KCNN3(SK3) protein(A246) detects endogenous levels of KCNN3(SK3)

Target Information

Gene name

KCNN3

Protein Name Small conductance calcium-activated potassium channel protein 3 (SK3) (SKCa 3) (SKCa3) (KCa2.3)

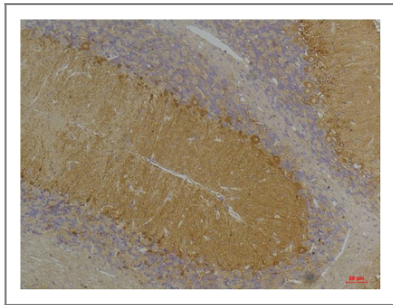
Organism	Gene ID	UniProt ID
Human	3782;	Q9UGI6;
Mouse		P58391;
Rat		P70605;

Cellular Localization Membrane; Multi-pass membrane protein.

Tissue specificity Atrium,Lymph,Non-pregnant myometrium,

Function Function:Forms a voltage-independent potassium channel activated by intracellular calcium. Activation is followed by membrane hyperpolarization. Thought to regulate neuronal excitability by contributing to the slow component of synaptic afterhyperpolarization. The channel is blocked by apamin.,polymorphism:The second poly-Gln region of KCNN3 is highly polymorphic and the number of Gln varies from 12 to 28 in the population.,similarity:Belongs to the potassium channel KCNN family.,subunit:Heterooligomer. The complex is composed of 4 channel subunits each of which binds to a calmodulin subunit which regulates the channel activity through calcium-binding.,

Validation Data



Immunohistochemical analysis of paraffin-embedded Rat Brain Tissue using KCNN3(SK3) Rabbit pAb diluted at 1:200.

Contact information

Orders: order.cn@immunoway.com
Support: support.cn@immunoway.com
Telephone: 400-8787-807(China)
Website: <http://www.immunoway.com.cn>
Address: 2200 Ringwood Ave San Jose, CA 95131 USA



Please scan the QR code to access additional product information:
KCNN3 (SK3) Rabbit pAb

