

VEGF Rabbit pAb

CatalogNo: YN5444 **Orthogonal Validated** 

Key Features

Host Species

- Rabbit

Reactivity

- Human, Mouse, Rat

Applications

- IF, WB, IHC, ELISA

MW

- 21kD(monomer), 42kD(dimer)
(Observed)

Isotype

- IgG

Storage

Storage* -15°C to -25°C/1 year (Do not lower than -25°C)

Formulation Liquid in PBS containing 50% glycerol, 0.5% BSA and 0.02% sodium azide.

Recommended Dilution Ratios

IF 1:50-200

WB 1:500-2000

IHC 1:50-300

ELISA 1:5000-20000

Basic Information

Clonality Polyclonal

Immunogen Information

Immunogen Recombinant Protein of VEGF of VEGFA. AA range:1-30

Specificity VEGF protein detects endogenous levels of VEGFA

Target Information

Gene name VEGFA

Protein Name VEGFA

Organism	Gene ID	UniProt ID
Human	7422;	P15692;
Mouse		Q00731;
Rat		P16612;

Cellular Localization

Secreted . VEGF121 is acidic and freely secreted. VEGF165 is more basic , has heparin-binding properties and , although a significant proportion remains cell-associated , most is freely secreted. VEGF189 is very basic , it is cell-associated after secretion and is bound avidly by heparin and the extracellular matrix , although it may be released as a soluble form by heparin , heparinase or plasmin.

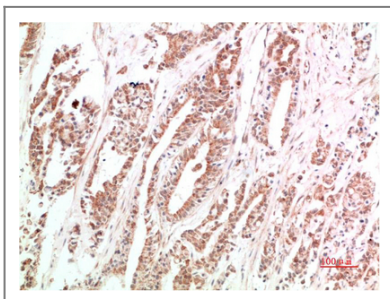
Tissue specificity

Isoform VEGF189 , isoform VEGF165 and isoform VEGF121 are widely expressed. Isoform VEGF206 and isoform VEGF145 are not widely expressed. A higher level expression seen in pituitary tumors as compared to the pituitary gland.

Function

Function:Growth factor active in angiogenesis , vasculogenesis and endothelial cell growth. Induces endothelial cell proliferation , promotes cell migration , inhibits apoptosis , and induces permeabilization of blood vessels. Binds to the VEGFR1/Flt-1 and VEGFR2/Kdr receptors , heparan sulfate and heparin. Neuropilin-1 binds isoforms VEGF-165 and VEGF-145. Isoform VEGF165B binds to VEGFR2/Kdr but doesn't activate downstream signaling pathways , doesn't activate angiogenesis and inhibits tumor growth. ,induction:Regulated by growth factors , cytokines , gonadotropins , nitric oxide , hypoxia , hypoglycemia and oncogenic mutations. ,online information:VEGF entry ,similarity:Belongs to the PDGF/VEGF growth factor family. ,subcellular location:VEGF121 is acidic and freely secreted. VEGF165 is more basic , has heparin-binding properties and , although a significant proportion remains cell-associated , most is freely secreted. VEGF189 is very basic , it is cell-associated after secretion and is bound avidly by heparin and the extracellular matrix , although it may be released as a soluble form by heparin , heparinase or plasmin. ,subunit:Homodimer; disulfide-linked. Also found as heterodimer with PlGF. ,tissue specificity:The VEGF189 , VEGF-165 and VEGF-121 isoforms are widely expressed , whereas the VEGF206 and VEGF-145 are uncommon. ,

Validation Data



Immunohistochemical analysis of paraffin-embedded Human Stomach Carcinoma Tissue using VEGF Rabbit pAb diluted at 1:500.

| Contact information

Orders: order.cn@immunoway.com
Support: support.cn@immunoway.com
Telephone: 400-8787-807(China)
Website: <http://www.immunoway.com.cn>
Address: 2200 Ringwood Ave San Jose, CA 95131 USA



Please scan the QR code
to access additional
product information:
VEGF Rabbit pAb

For Research Use Only. Not for Use in Diagnostic Procedures.

[Antibody](#) | [ELISA Kits](#) | [Protein](#) | [Reagents](#)