

β-Tubulin Rabbit pAb

CatalogNo: YN5434 Orthogonal Validated 

Key Features

Host Species

- Rabbit

Reactivity

- Human, Mouse, Rat

Applications

- WB

MW

- 55kD (Observed)

Isotype

- IgG

Storage

Storage* -15°C to -25°C/1 year (Do not lower than -25°C)**Formulation** PBS, pH 7.4, containing 0.5% BSA, 0.02% sodium azide as Preservative and 50% Glycerol.

Recommended Dilution Ratios

WB 1:2000-5000

Basic Information

Clonality Polyclonal

Immunogen Information

Immunogen Recombinant Protein of Tubulin beta. AA range:1-50**Specificity** The antibody detects endogenous β tubulin protein.

Target Information

Gene name TUBB3

Protein Name Tubulin beta-3 chain

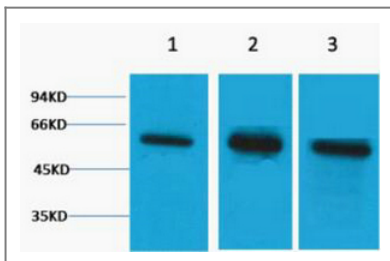
Organism	Gene ID	UniProt ID
Human	10381;	Q13509;
Mouse	22152;	Q9ERD7;
Rat	246118;	Q4QRB4;

Cellular Localization Cytoplasm, cytoskeleton . Cell projection, growth cone . Cell projection, lamellipodium . Cell projection, filopodium .

Tissue specificity Expression is primarily restricted to central and peripheral nervous system. Greatly increased expression in most cancerous tissues.

Function Domain:The highly acidic C-terminal region may bind cations such as calcium.,Function:Receptor for MSH (alpha, beta and gamma) and ACTH. The activity of this receptor is mediated by G proteins which activate adenylate cyclase.,Function:Tubulin is the major constituent of microtubules. It binds two moles of GTP, one at an exchangeable site on the beta chain and one at a non-exchangeable site on the alpha-chain.,polymorphism:Genetic variations in MC1R are associated with variation in skin/hair/eye pigmentation type 2 (SHEP2) [MIM:266300]. Hair, eye and skin pigmentation are among the most visible examples of human phenotypic variation, with a broad normal range that is subject to substantial geographic stratification. In the case of skin, individuals tend to have lighter pigmentation with increasing distance from the equator. By contrast, the majority of variation in human eye and hair color is found among individuals of European ancestry, with most other human populations fixed for brown eyes and black hair.,polymorphism:Variations in MC1R are linked to the degree of skin pigmentation (Types I-IV). Type I skin the most lightly pigmented and type IV the most dark pigmented. Partial loss-of-function mutations are associated with fair skin, poor tanning and increased skin cancer risk.,similarity:Belongs to the G-protein coupled receptor 1 family.,similarity:Belongs to the tubulin family.,subunit:Dimer of alpha and beta chains.,tissue specificity:Melanocytes and corticoadrenal tissue.,

Validation Data



Western blot analysis of 1) Hela, 2) Mouse Brain, 3) Rat Brain tissue, diluted at 1:5000. Secondary antibody(catalog#:RS0002) was diluted at 1:20000

Contact information

Orders: order.cn@immunoway.com
Support: support.cn@immunoway.com
Telephone: 400-8787-807(China)
Website: <http://www.immunoway.com.cn>
Address: 2200 Ringwood Ave San Jose, CA 95131 USA



Please scan the QR code
to access additional
product information:
 **β -Tubulin Rabbit
pAb**

For Research Use Only. Not for Use in Diagnostic Procedures.

[Antibody](#) | [ELISA Kits](#) | [Protein](#) | [Reagents](#)