

PC11X Rabbit pAb

CatalogNo: YN4329

Key Features

Host Species

- Rabbit

Reactivity

- Human

Applications

- WB

MW

- 148kD (Calculated)

Isotype

- IgG

Recommended Dilution Ratios

WB 1:500-2000

Storage

Storage* -15°C to -25°C/1 year(Do not lower than -25°C)

Formulation Liquid in PBS containing 50% glycerol, 0.5% BSA and 0.02% sodium azide.

Basic Information

Clonality Polyclonal

Immunogen Information

Immunogen Synthesized peptide derived from human PC11X AA range: 836-886

Specificity This antibody detects endogenous levels of PC11X at Human

Target Information

Gene name PCDH11X KIAA1326 PCDH11 PCDHX

Protein Name PC11X

Organism

Human

Gene ID

[27328;](#)

UniProt ID

[Q9BZA7;](#)

**Cellular
Localization**

Cell membrane ; Single-pass type I membrane protein .

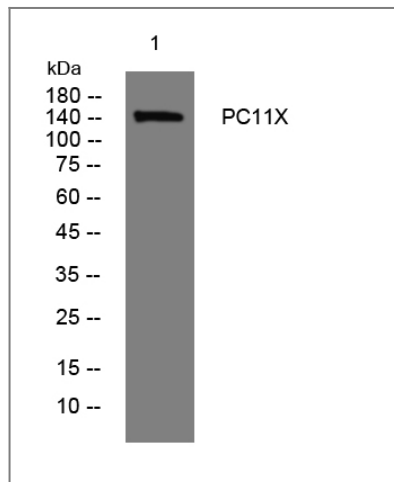
Tissue specificity

Expressed strongly in fetal brain and brain (cortex, amygdala, thalamus, substantia nigra, hippocampus, caudate nucleus and corpus callosum). Expressed at low level in testis.

Function

Alternative products:Additional isoforms seem to exist,Function:Potential calcium-dependent cell-adhesion protein.,similarity:Contains 7 cadherin domains.,tissue specificity:Expressed strongly in fetal brain and brain (cortex, amygdala, thalamus, substantia nigra, hippocampus, caudate nucleus and corpus callosum). Expressed at low level in testis.,

Validation Data



Western blot analysis of lysates from CACO2 cells, primary antibody was diluted at 1:1000, 4° over night

Contact information

Orders: order.cn@immunoway.com
Support: support.cn@immunoway.com
Telephone: 400-8787-807(China)
Website: <http://www.immunoway.com.cn>
Address: 2200 Ringwood Ave San Jose, CA 95131 USA



Please scan the QR code to access additional product information:
PC11X Rabbit pAb