

## CJ076 Rabbit pAb

CatalogNo: YN4321

### Key Features

#### Host Species

- Rabbit

#### Reactivity

- Human, Mouse

#### Applications

- WB

#### MW

- 76kD (Calculated)

#### Isotype

- IgG

### Storage

**Storage\*** -15°C to -25°C/1 year (Do not lower than -25°C)

**Formulation** Liquid in PBS containing 50% glycerol, 0.5% BSA and 0.02% sodium azide.

### Recommended Dilution Ratios

**WB 1:500-2000**

### Basic Information

**Clonality** Polyclonal

### Immunogen Information

**Immunogen** Synthesized peptide derived from human CJ076 AA range: 135-185

**Specificity** This antibody detects endogenous levels of CJ076 at Human/Mouse

### Target Information

**Gene name** C10orf76

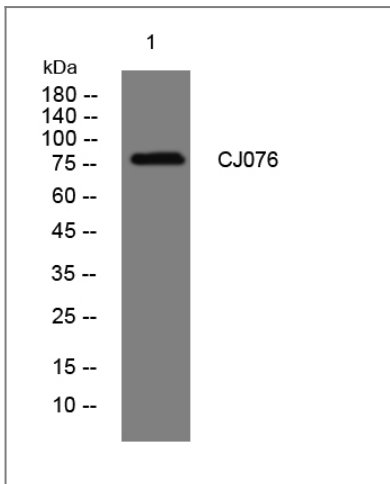
**Protein Name** CJ076

Organism	Gene ID	UniProt ID
Human	<a href="#">79591</a> ;	<a href="#">Q5T2E6</a> ;
Mouse	<a href="#">71617</a> ;	<a href="#">Q6PD19</a> ;

**Cellular Localization** Golgi apparatus membrane ; Single-pass membrane protein . Cytoplasm . The majority of ARMD3 is cytosolic, with a portion colocalizing with GBF1 at juxtannuclear Golgi sites. .

**Function** similarity:Belongs to the UPF0668 family.,

## Validation Data



Western blot analysis of lysates from HCT116 cells, primary antibody was diluted at 1:1000, 4°over night

## Contact information

Orders: [order.cn@immunoway.com](mailto:order.cn@immunoway.com)  
Support: [support.cn@immunoway.com](mailto:support.cn@immunoway.com)  
Telephone: 400-8787-807(China)  
Website: <http://www.immunoway.com.cn>  
Address: 2200 Ringwood Ave San Jose, CA 95131 USA



Please scan the QR code to access additional product information:  
**CJ076 Rabbit pAb**

For Research Use Only. Not for Use in Diagnostic Procedures.

[Antibody](#) | [ELISA Kits](#) | [Protein](#) | [Reagents](#)