

MMRN1 Rabbit pAb

CatalogNo: YN4274

Key Features

Host Species

- Rabbit

Reactivity

- Human, Mouse

Applications

- WB

MW

- 135kD (Calculated)

Isotype

- IgG

Recommended Dilution Ratios

WB 1:500-2000

Storage

Storage* -15°C to -25°C/1 year (Do not lower than -25°C)

Formulation Liquid in PBS containing 50% glycerol, 0.5% BSA and 0.02% sodium azide.

Basic Information

Clonality Polyclonal

Immunogen Information

Immunogen Synthesized peptide derived from human MMRN1 AA range: 963-1013

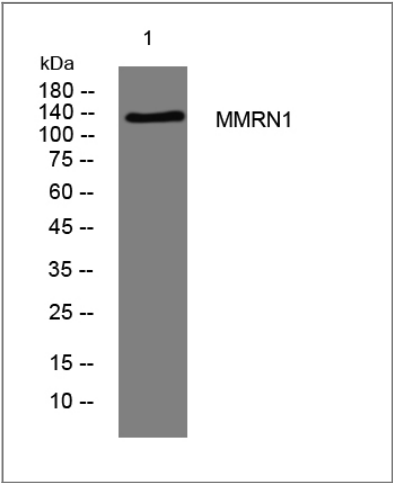
Specificity This antibody detects endogenous levels of MMRN1 at Human/Mouse

Target Information

Gene name MMRN1 ECM EMILIN4 GPIA* MMRN

Protein Name	MMRN1		
	Organism	Gene ID	UniProt ID
	Human	22915;	Q13201;
	Mouse	70945;	B2RPV6;
Cellular Localization	Secreted .		
Tissue specificity	Synthesized by endothelial cells and megakaryocytes. Stored in platelet alpha granules and endothelial cell Weibel-Palade bodies, following activation of these cells, it is released and attached to megakaryocytes, platelets, endothelium and subendothelium of blood vessels. Not found in plasma. Found in vascular tissues such as placenta, lung, and liver.		
Function	Disease:Deficiency in multimerin-1 due to proteolytic degradation within the platelet alpha granules is associated with an autosomal dominant bleeding disorder (factor V Quebec).,Function:Carrier protein for platelet (but not plasma) factor V/Va. Plays a role in the storage and stabilization of factor V in platelets. Upon release following platelet activation, may limit platelet and plasma factor Va-dependent thrombin generation. Ligand for integrin alpha-IIb/beta-3 and integrin alpha-V/beta-3 on activated platelets, and may function as an extracellular matrix or adhesive protein.,PTM:Extensively N-glycosylated.,PTM:The N-terminus is blocked.,similarity:Contains 1 C1q domain.,similarity:Contains 1 EGF-like domain.,similarity:Contains 1 EMI domain.,subunit:Multimeric. Composed of varying sized, disulfide-linked multimers, the smallest of which is a homotrimer. Proteolysis of the promultimerin in the N-terminal region, leads to the mature p155 form that is stored in platelets. Interacts with factor V/Va.,tissue specificity:Synthesized by endothelial cells and megakaryocytes. Stored in platelet alpha granules and endothelial cell Weibel-Palade bodies, following activation of these cells, it is released and attached to megakaryocytes, platelets, endothelium and subendothelium of blood vessels. Not found in plasma. Found in vascular tissues such as placenta, lung, and liver.,		

Validation Data



Western blot analysis of lysates from KB cells, primary antibody was diluted at 1:1000, 4°over night

| Contact information

Orders: order.cn@immunoway.com
Support: support.cn@immunoway.com
Telephone: 400-8787-807(China)
Website: <http://www.immunoway.com.cn>
Address: 2200 Ringwood Ave San Jose, CA 95131 USA



Please scan the QR code
to access additional
product information:
MMRN1 Rabbit pAb

For Research Use Only. Not for Use in Diagnostic Procedures.

[Antibody](#) | [ELISA Kits](#) | [Protein](#) | [Reagents](#)