

IGJ Rabbit pAb

CatalogNo: YN4264

Key Features

Host Species

- Rabbit

Reactivity

- Human, Mouse

Applications

- WB

MW

- 17kD (Calculated)

Isotype

- IgG

Recommended Dilution Ratios

WB 1:500-2000

Storage

Storage* -15°C to -25°C/1 year (Do not lower than -25°C)**Formulation** Liquid in PBS containing 50% glycerol, 0.5% BSA and 0.02% sodium azide.

Basic Information

Clonality Polyclonal

Immunogen Information

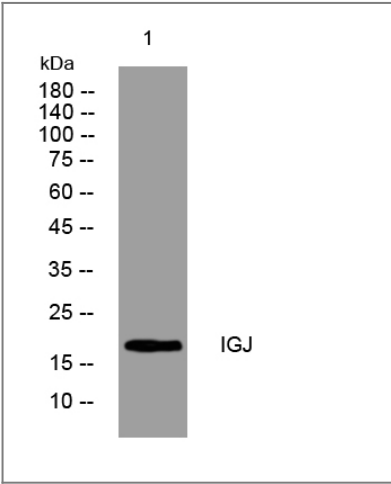
Immunogen Synthesized peptide derived from human IGJ AA range: 81-131**Specificity** This antibody detects endogenous levels of IGJ at Human/Mouse

Target Information

Gene name IGJ IGCJ

| | | | |
|-----------------------|--|------------------------|-------------------------|
| Protein Name | IGJ | | |
| | Organism | Gene ID | UniProt ID |
| | Human | 3512; | P01591; |
| | Mouse | 16069; | P01592; |
| Cellular Localization | Secreted . | | |
| Function | Function:Serves to link two monomer units of either IgM or IgA. In the case of IgM, the J chain-joined dimer is a nucleating unit for the IgM pentamer, and in the case of IgA it induces larger polymers. It also help to bind these immunoglobulins to secretory component., | | |

Validation Data



Western blot analysis of lysates from THP-1 cells, primary antibody was diluted at 1:1000, 4°over night

Contact information

Orders: order.cn@immunoway.com
 Support: support.cn@immunoway.com
 Telephone: 400-8787-807(China)
 Website: <http://www.immunoway.com.cn>
 Address: 2200 Ringwood Ave San Jose, CA 95131 USA



Please scan the QR code
 to access additional
 product information:
IGJ Rabbit pAb