

## EXOS2 Rabbit pAb

CatalogNo: YN4230

### Key Features

#### Host Species

- Rabbit

#### Reactivity

- Human, Mouse

#### Applications

- WB

#### MW

- 32kD (Calculated)

#### Isotype

- IgG

### Recommended Dilution Ratios

WB 1:500-2000

### Storage

**Storage\*** -15°C to -25°C/1 year (Do not lower than -25°C)

**Formulation** Liquid in PBS containing 50% glycerol, 0.5% BSA and 0.02% sodium azide.

### Basic Information

**Clonality** Polyclonal

### Immunogen Information

**Immunogen** Synthesized peptide derived from human EXOS2 AA range: 90-140

**Specificity** This antibody detects endogenous levels of EXOS2 at Human/Mouse

### Target Information

**Gene name** EXOSC2 RRP4

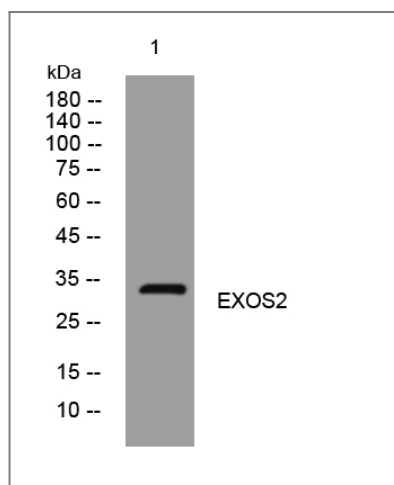
**Protein Name** EXOS2

Organism	Gene ID	UniProt ID
Human	<a href="#">23404;</a>	<a href="#">Q13868;</a>
Mouse	<a href="#">227715;</a>	<a href="#">Q8VBV3;</a>

**Cellular Localization** Cytoplasm. Nucleus, nucleolus. Nucleus.

**Function** Function:Component of the exosome 3'->5' exoribonuclease complex, a complex that degrades inherently unstable mRNAs containing AU-rich elements (AREs) within their 3' untranslated regions. Required for the 3' processing of the 7S pre-rRNA to the mature 5.8S rRNA. Has a 3'-5' exonuclease activity.,similarity:Contains 1 S1 motif domain.,subunit:Component of the exosome multienzyme ribonuclease complex composed of at least 11 proteins: EXOSC1/CSL4, EXOSC2/RRP4, EXOSC3/RRP40, EXOSC4/RRP41, EXOSC5/RRP46, EXOSC6/MTR3, EXOSC7/RRP42, EXOSC8/RRP43, EXOSC9/Scl-75, DIS3/RRP44, and EXOSC10/Scl-100 (only in the nuclear complex). Found in a mRNA decay complex with RENT1, RENT2 and RENT3B. Also associated with the GTPase Ran.,

## Validation Data



Western blot analysis of lysates from MCF-7 cells, primary antibody was diluted at 1:1000, 4° over night

## Contact information

Orders: order.cn@immunoway.com  
Support: support.cn@immunoway.com  
Telephone: 400-8787-807(China)  
Website: <http://www.immunoway.com.cn>  
Address: 2200 Ringwood Ave San Jose, CA 95131 USA



Please scan the QR code to access additional product information:  
**EXOS2 Rabbit pAb**

