

## WFKN2 Rabbit pAb

CatalogNo: YN4205

### | Key Features

#### Host Species

- Rabbit

#### Reactivity

- Human, Mouse

#### Applications

- WB

#### MW

- 63kD (Calculated)

#### Isotype

- IgG

### | Recommended Dilution Ratios

WB 1:500-2000

### | Storage

**Storage\*** -15°C to -25°C/1 year (Do not lower than -25°C)

**Formulation** Liquid in PBS containing 50% glycerol, 0.5% BSA and 0.02% sodium azide.

### | Basic Information

**Clonality** Polyclonal

### | Immunogen Information

**Immunogen** Synthesized peptide derived from human WFKN2 AA range: 506-556

**Specificity** This antibody detects endogenous levels of WFKN2 at Human/Mouse

### | Target Information

**Gene name** WFIKKN2 GASP1 WFIKKNRP UNQ9235/PRO31996

**Protein Name** WFKN2

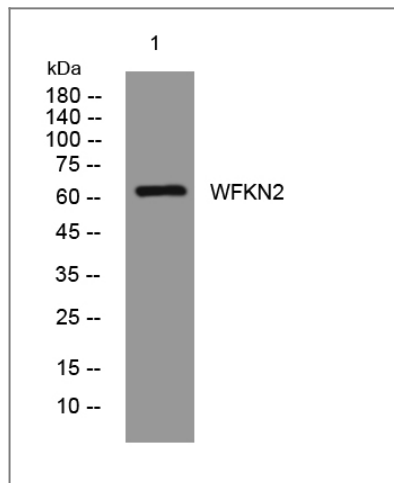
Organism	Gene ID	UniProt ID
Human	<a href="#">124857</a> ;	<a href="#">Q8TEU8</a> ;
Mouse	<a href="#">278507</a> ;	<a href="#">Q7TQN3</a> ;

**Cellular Localization** Secreted .

**Tissue specificity** Primarily expressed in ovary, testis and brain, but not in liver. In fetal tissues, it is primarily expressed in brain, skeletal muscle, thymus and kidney.

**Function** Function:Protease-inhibitor that contains multiple distinct protease inhibitor domains. Probably has serine protease- and metalloprotease-inhibitor activity. Inhibits the biological activity of mature myostatin, but not activin.,similarity:Belongs to the WFIKKN family.,similarity:Contains 1 BPTI/Kunitz inhibitor domain.,similarity:Contains 1 Ig-like C2-type (immunoglobulin-like) domain.,similarity:Contains 1 Kazal-like domain.,similarity:Contains 1 NTR domain.,similarity:Contains 1 WAP domain.,similarity:Contains 2 BPTI/Kunitz inhibitor domains.,subunit:Interacts with both mature and propeptide myostatin/MSTN.,tissue specificity:Primarily expressed in ovary, testis and brain, but not in liver. In fetal tissues, it is primarily expressed in brain, skeletal muscle, thymus and kidney.,

## Validation Data



Western blot analysis of lysates from HeLa cells, primary antibody was diluted at 1:1000, 4° over night

## Contact information

Orders: order.cn@immunoway.com  
Support: support.cn@immunoway.com  
Telephone: 400-8787-807(China)  
Website: <http://www.immunoway.com.cn>  
Address: 2200 Ringwood Ave San Jose, CA 95131 USA



Please scan the QR code to access additional product information:  
**WFKN2 Rabbit pAb**

