

S35G1 Rabbit pAb

CatalogNo: YN4197

Key Features

Host Species

- Rabbit

Reactivity

- Human, Mouse

Applications

- WB

MW

- 40kD (Calculated)

Isotype

- IgG

Recommended Dilution Ratios

WB 1:500-2000

Storage

Storage* -15°C to -25°C/1 year (Do not lower than -25°C)

Formulation Liquid in PBS containing 50% glycerol, 0.5% BSA and 0.02% sodium azide.

Basic Information

Clonality Polyclonal

Immunogen Information

Immunogen Synthesized peptide derived from human S35G1 AA range: 14-64

Specificity This antibody detects endogenous levels of S35G1 at Human/Mouse

Target Information

Gene name SLC35G1 C10orf60 TMEM20

Protein Name S35G1

Organism	Gene ID	UniProt ID
Human	159371 ;	Q2M3R5 ;
Mouse	240660 ;	Q8BY79 ;

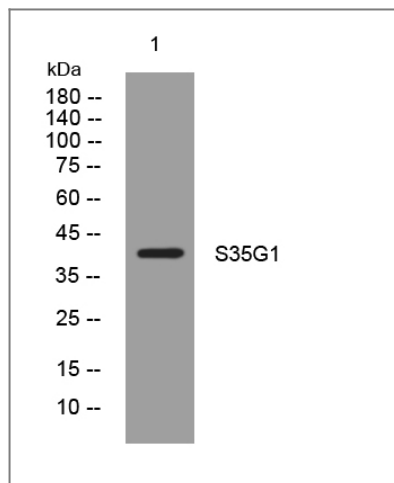
Cellular Localization

Cell membrane ; Multi-pass membrane protein . Endoplasmic reticulum membrane ; Multi-pass membrane protein . Translocates from the endoplasmic reticulum to the cell membrane in response to a depletion of intracellular calcium and is detected at punctae corresponding to junctions between the endoplasmic reticulum and the cell membrane.

Tissue specificity Ubiquitously expressed.

Function similarity:Contains 2 DUF6 domains.,

Validation Data



Western blot analysis of lysates from HeLa cells, primary antibody was diluted at 1:1000, 4°over night

Contact information

Orders: order.cn@immunoway.com
Support: support.cn@immunoway.com
Telephone: 400-8787-807(China)
Website: <http://www.immunoway.com.cn>
Address: 2200 Ringwood Ave San Jose, CA 95131 USA



Please scan the QR code to access additional product information:
S35G1 Rabbit pAb