

KRA59 Rabbit pAb

CatalogNo: YN4173

Key Features

Host Species

- Rabbit

Reactivity

- Human

Applications

- WB

MW

- 19kD (Calculated)

Isotype

- IgG

Storage

Storage* -15°C to -25°C/1 year(Do not lower than -25°C)

Formulation Liquid in PBS containing 50% glycerol, 0.5% BSA and 0.02% sodium azide.

Recommended Dilution Ratios

WB 1:500-2000

Basic Information

Clonality Polyclonal

Immunogen Information

Immunogen Synthesized peptide derived from human KRA59 AA range: 9-59

Specificity This antibody detects endogenous levels of KRA59 at Human

Target Information

Gene name KRTAP5-9 KAP5.9 KRN1 KRTAP5.9 UHSK1

Protein Name KRA59

Organism

Human

Gene ID

[3846;](#)

UniProt ID

[P26371;](#)

Cellular Localization

keratin filament,

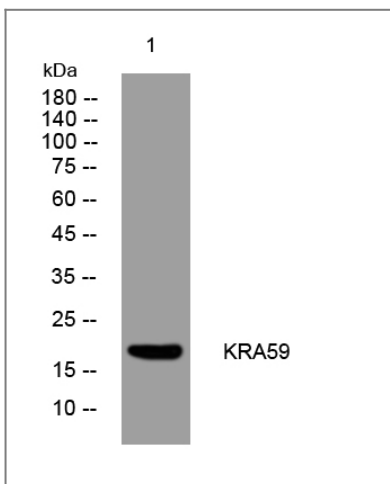
Tissue specificity

Restricted to hair root, not detected in any other tissues. Expressed in cuticle layers of differentiating hair follicles.

Function

developmental stage:At a late stage of fiber differentiation.,Function:In the hair cortex, hair keratin intermediate filaments are embedded in an interfilamentous matrix, consisting of hair keratin-associated protein (KRTAP), which are essential for the formation of a rigid and resistant hair shaft through their extensive disulfide bond cross-linking with abundant cysteine residues of hair keratins. The matrix proteins include the high-sulfur and high-glycine-tyrosine keratins.,similarity:Belongs to the KRTAP type 5 family.,subunit:Interacts with hair keratins.,tissue specificity:Restricted to hair root, not detected in any other tissues. Expressed in cuticle layers of differentiating hair follicles.,

Validation Data



Western blot analysis of lysates from MCF-7 cells, primary antibody was diluted at 1:1000, 4° over night

Contact information

Orders: order.cn@immunoway.com
Support: support.cn@immunoway.com
Telephone: 400-8787-807(China)
Website: <http://www.immunoway.com.cn>
Address: 2200 Ringwood Ave San Jose, CA 95131 USA



Please scan the QR code to access additional product information:
KRA59 Rabbit pAb

