

ONEC3 Rabbit pAb

CatalogNo: YN4170

Key Features

Host Species

- Rabbit

Reactivity

- Human, Mouse

Applications

- WB

MW

- 54kD (Calculated)

Isotype

- IgG

Storage

Storage* -15°C to -25°C/1 year (Do not lower than -25°C)

Formulation Liquid in PBS containing 50% glycerol, 0.5% BSA and 0.02% sodium azide.

Recommended Dilution Ratios

WB 1:500-2000

Basic Information

Clonality Polyclonal

Immunogen Information

Immunogen Synthesized peptide derived from human ONEC3 AA range: 113-163

Specificity This antibody detects endogenous levels of ONEC3 at Human/Mouse

Target Information

Gene name ONECUT3

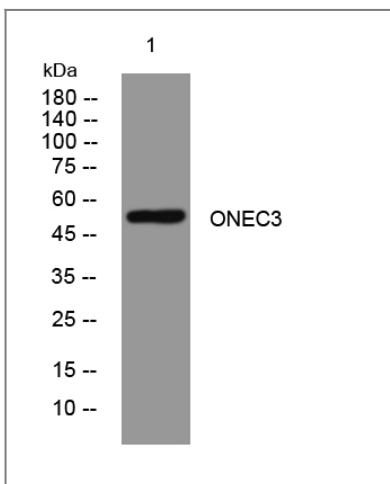
Protein Name ONEC3

Organism	Gene ID	UniProt ID
Human	390874 ;	O60422 ;
Mouse	246086 ;	Q8K557 ;

Cellular Localization Nucleus .

Function Function:Transcriptional activator. Binds the consensus DNA sequence 5'-DHWATTGAYTWW-3' on a variety of gene promoters such as those of HNF3B and TTR. ,similarity:Contains 1 CUT DNA-binding domain. ,similarity:Contains 1 homeobox DNA-binding domain. ,

Validation Data



Western blot analysis of lysates from A431 cells, primary antibody was diluted at 1:1000, 4°C over night

Contact information

Orders: order.cn@immunoway.com
Support: support.cn@immunoway.com
Telephone: 400-8787-807(China)
Website: <http://www.immunoway.com.cn>
Address: 2200 Ringwood Ave San Jose, CA 95131 USA



Please scan the QR code to access additional product information:
ONEC3 Rabbit pAb