

## CD048 Rabbit pAb

CatalogNo: YN4152

### Key Features

#### Host Species

- Rabbit

#### Reactivity

- Human, Mouse

#### Applications

- IHC, IF

#### MW

- 10kD (Calculated)

#### Isotype

- IgG

### Storage

**Storage\*** -15°C to -25°C/1 year (Do not lower than -25°C)

**Formulation** Liquid in PBS containing 50% glycerol, 0.5% BSA and 0.02% sodium azide.

### Recommended Dilution Ratios

IHC 1:50-200

IF 1:50-200

### Basic Information

**Clonality** Polyclonal

### Immunogen Information

**Immunogen** Synthesized peptide derived from human CD048 AA range: 24-74

**Specificity** This antibody detects endogenous levels of CD048 at Human/Mouse

### Target Information

**Gene name** C4orf48 Chr4\_55

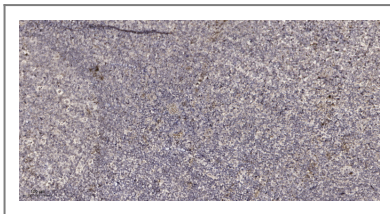
**Protein Name** CD048

Organism	Gene ID	UniProt ID
Human		<a href="#">Q5BLP8</a> ;
Mouse	<a href="#">381633</a> ;	<a href="#">Q3UR78</a> ;

**Cellular Localization** Secreted .

**Tissue specificity** Brain-specific (at protein level).

## Validation Data



Immunohistochemical analysis of paraffin-embedded human tonsil. 1, Antibody was diluted at 1:200(4° overnight). 2, Tris-EDTA,pH9.0 was used for antigen retrieval. 3,Secondary antibody was diluted at 1:200(room temperature, 30min).

## Contact information

Orders: [order.cn@immunoway.com](mailto:order.cn@immunoway.com)  
Support: [support.cn@immunoway.com](mailto:support.cn@immunoway.com)  
Telephone: 400-8787-807(China)  
Website: <http://www.immunoway.com.cn>  
Address: 2200 Ringwood Ave San Jose, CA 95131 USA



Please scan the QR code to access additional product information:  
**CD048 Rabbit pAb**

For Research Use Only. Not for Use in Diagnostic Procedures.

[Antibody](#) | [ELISA Kits](#) | [Protein](#) | [Reagents](#)