

KRA46 Rabbit pAb

CatalogNo: YN4106

| Key Features

Host Species

- Rabbit

Reactivity

- Human

Applications

- WB

MW

- 22kD (Calculated)

Isotype

- IgG

| Recommended Dilution Ratios

WB 1:500-2000

| Storage

Storage* -15°C to -25°C/1 year(Do not lower than -25°C)

Formulation Liquid in PBS containing 50% glycerol, 0.5% BSA and 0.02% sodium azide.

| Basic Information

Clonality Polyclonal

| Immunogen Information

Immunogen Synthesized peptide derived from human KRA46 AA range: 43-93

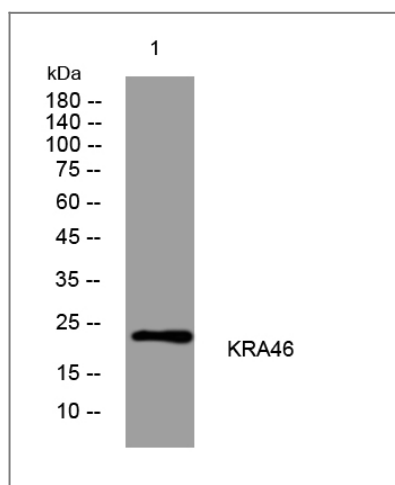
Specificity This antibody detects endogenous levels of KRA46 at Human

| Target Information

Gene name KRTAP4-6 KAP4.15 KRTAP4-15 KRTAP4.15 KRTAP4.6

Protein Name	KRA46		
	Organism	Gene ID	UniProt ID
	Human	81871 ;	Q9BYQ5 ;
Cellular Localization	keratin filament,		
Tissue specificity	Expressed in the hair follicles.		
Function	Caution:Could be the product of a pseudogene.,Caution:The sequence shown here is derived from an Ensembl automatic analysis pipeline and should be considered as preliminary data.,Function:In the hair cortex, hair keratin intermediate filaments are embedded in an interfilamentous matrix, consisting of hair keratin-associated proteins (KRTAP), which are essential for the formation of a rigid and resistant hair shaft through their extensive disulfide bond cross-linking with abundant cysteine residues of hair keratins. The matrix proteins include the high-sulfur and high-glycine-tyrosine keratins.,sequence Caution:Wrong choice of frame.,similarity:Belongs to the KRTAP type 4 family.,subunit:Interacts with hair keratins.,		

Validation Data



Western blot analysis of lysates from VEC cells, primary antibody was diluted at 1:1000, 4° over night

Contact information

Orders: order.cn@immunoway.com
 Support: support.cn@immunoway.com
 Telephone: 400-8787-807(China)
 Website: <http://www.immunoway.com.cn>
 Address: 2200 Ringwood Ave San Jose, CA 95131 USA



Please scan the QR code
 to access additional
 product information:
KRA46 Rabbit pAb

