

## NIPA2 Rabbit pAb

CatalogNo: YN4105

### Key Features

**Host Species**

- Rabbit

**Reactivity**

- Human, Mouse

**Applications**

- WB

**MW**

- 40kD (Calculated)

**Isotype**

- IgG

### Recommended Dilution Ratios

WB 1:500-2000

### Storage

**Storage\*** -15°C to -25°C/1 year (Do not lower than -25°C)**Formulation** Liquid in PBS containing 50% glycerol, 0.5% BSA and 0.02% sodium azide.

### Basic Information

**Clonality** Polyclonal

### Immunogen Information

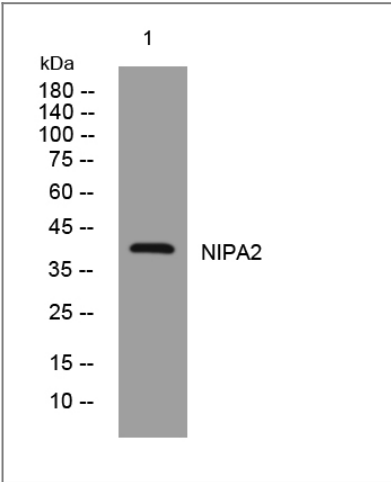
**Immunogen** Synthesized peptide derived from human NIPA2 AA range: 175-225**Specificity** This antibody detects endogenous levels of NIPA2 at Human/Mouse

### Target Information

**Gene name** NIPA2

<b>Protein Name</b>	NIPA2		
	<b>Organism</b>	<b>Gene ID</b>	<b>UniProt ID</b>
	Human	<a href="#">81614;</a>	<a href="#">Q8N8Q9;</a>
	Mouse	<a href="#">93790;</a>	<a href="#">Q9JJC8;</a>
<b>Cellular Localization</b>	Cell membrane ; Multi-pass membrane protein . Early endosome . Recruited to the cell membrane in response to low extracellular magnesium. .		
<b>Tissue specificity</b>	Widely expressed.		
<b>Function</b>	similarity:Belongs to the NIPA family.,tissue specificity:Widely expressed.,		

| Validation Data



Western blot analysis of lysates from U2OS cells, primary antibody was diluted at 1:1000, 4°over night

| Contact information

Orders: order.cn@immunoway.com  
Support: support.cn@immunoway.com  
Telephone: 400-8787-807(China)  
Website: http://www.immunoway.com.cn  
Address: 2200 Ringwood Ave San Jose, CA 95131 USA



Please scan the QR code to access additional product information:  
**NIPA2 Rabbit pAb**