

SRPX Rabbit pAb

CatalogNo: YN4097

| Key Features

Host Species

- Rabbit

Reactivity

- Human, Mouse, Rat

Applications

- WB

MW

- 51kD (Calculated)

Isotype

- IgG

| Recommended Dilution Ratios

WB 1:500-2000

| Storage

Storage* -15°C to -25°C/1 year (Do not lower than -25°C)

Formulation Liquid in PBS containing 50% glycerol, 0.5% BSA and 0.02% sodium azide.

| Basic Information

Clonality Polyclonal

| Immunogen Information

Immunogen Synthesized peptide derived from human SRPX AA range: 234-284

Specificity This antibody detects endogenous levels of SRPX at Human/Mouse/Rat

| Target Information

Gene name SRPX ETX1

Protein Name SRPX

Organism	Gene ID	UniProt ID
Human	8406;	P78539;
Mouse	51795;	Q9R0M3;
Rat	64316;	Q63769;

Cellular Localization

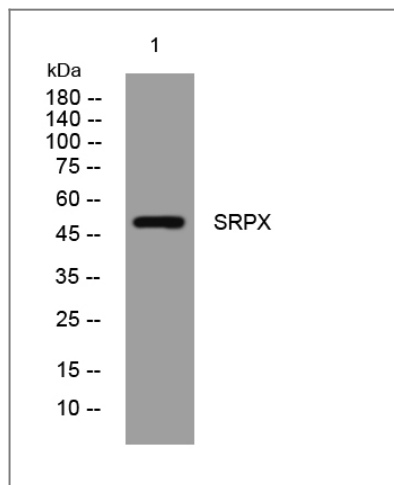
Cell surface . Possibly surface of photoreceptor cell.

Tissue specificity Retina and heart; less in placenta, pancreas, lung, liver, skeletal muscle, kidney and brain.

Function

Alternative products:Additional isoforms seem to exist,Function:May be involved in phagocytosis during disk shedding, cell adhesion to cells other than the pigment epithelium or signal transduction.,similarity:Contains 1 HYR domain.,similarity:Contains 3 Sushi (CCP/SCR) domains.,subcellular location:Possibly surface of photoreceptor cell.,tissue specificity:Retina and heart; less in placenta, pancreas, lung, liver, skeletal muscle, kidney and brain.,

Validation Data



Western blot analysis of lysates from KB cells, primary antibody was diluted at 1:1000, 4° over night

Contact information

Orders: order.cn@immunoway.com
Support: support.cn@immunoway.com
Telephone: 400-8787-807(China)
Website: <http://www.immunoway.com.cn>
Address: 2200 Ringwood Ave San Jose, CA 95131 USA



Please scan the QR code to access additional product information:
SRPX Rabbit pAb

