

ASCC1 Rabbit pAb

CatalogNo: YN4067

Key Features

Host Species

- Rabbit

Reactivity

- Human, Mouse

Applications

- WB

MW

- 44kD (Calculated)

Isotype

- IgG

Recommended Dilution Ratios

WB 1:500-2000

Storage

Storage* -15°C to -25°C/1 year (Do not lower than -25°C)

Formulation Liquid in PBS containing 50% glycerol, 0.5% BSA and 0.02% sodium azide.

Basic Information

Clonality Polyclonal

Immunogen Information

Immunogen Synthesized peptide derived from human ASCC1 AA range: 289-339

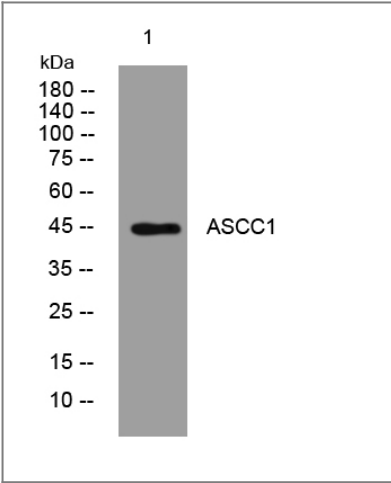
Specificity This antibody detects endogenous levels of ASCC1 at Human/Mouse

Target Information

Gene name ASCC1 CGI-18

| | | | |
|------------------------------|--|-------------------------|--------------------------|
| Protein Name | ASCC1 | | |
| | Organism | Gene ID | UniProt ID |
| | Human | 51008 ; | Q8N9N2 ; |
| | Mouse | 69090 ; | Q9D8Z1 ; |
| Cellular Localization | Nucleus . Nucleus speckle . Colocalizes with PRPF8 in nuclear speckles in the absence of DNA damage. . | | |
| Tissue specificity | Ubiquitous. | | |
| Function | Function:Enhances NF-kappa-B, SRF and AP1 transactivation.,similarity:Contains 1 KH domain.,subunit:Part of TRIP4 complex, that contains ASCC1, ASCC2 and ASCC3.,tissue specificity:Ubiquitous., | | |

| Validation Data



Western blot analysis of lysates from A549 cells, primary antibody was diluted at 1:1000, 4°over night

| Contact information

Orders: order.cn@immunoway.com
 Support: support.cn@immunoway.com
 Telephone: 400-8787-807(China)
 Website: <http://www.immunoway.com.cn>
 Address: 2200 Ringwood Ave San Jose, CA 95131 USA



Please scan the QR code to access additional product information:
ASCC1 Rabbit pAb