

GPN3 Rabbit pAb

CatalogNo: YN4033

Key Features

Host Species

- Rabbit

Reactivity

- Human, Mouse, Rat

Applications

- WB

MW

- 31kD (Calculated)

Isotype

- IgG

Recommended Dilution Ratios

WB 1:500-2000

Storage

Storage* -15°C to -25°C/1 year (Do not lower than -25°C)

Formulation Liquid in PBS containing 50% glycerol, 0.5% BSA and 0.02% sodium azide.

Basic Information

Clonality Polyclonal

Immunogen Information

Immunogen Synthesized peptide derived from human GPN3 AA range: 184-234

Specificity This antibody detects endogenous levels of GPN3 at Human/Mouse/Rat

Target Information

Gene name GPN3 ATPBD1C AD-009 UNQ1876/PRO4319

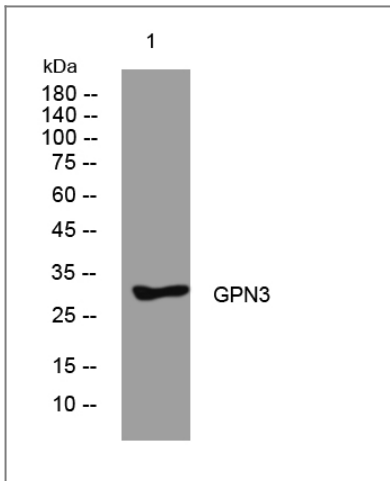
Protein Name GPN3

Organism	Gene ID	UniProt ID
Human	51184 ;	Q9UHW5 ;
Mouse	68080 ;	Q9D3W4 ;
Rat	360810 ;	Q6R518 ;

Cellular Localization intracellular,protein complex,

Function similarity:Belongs to the GPN-loop GTPase family.,

Validation Data



Western blot analysis of lysates from A549 cells, primary antibody was diluted at 1:1000, 4° over night

Contact information

Orders: order.cn@immunoway.com
Support: support.cn@immunoway.com
Telephone: 400-8787-807(China)
Website: <http://www.immunoway.com.cn>
Address: 2200 Ringwood Ave San Jose, CA 95131 USA



Please scan the QR code to access additional product information:
GPN3 Rabbit pAb

For Research Use Only. Not for Use in Diagnostic Procedures.

[Antibody](#) | [ELISA Kits](#) | [Protein](#) | [Reagents](#)