

## PSPHL Rabbit pAb

CatalogNo: YN3938

### Key Features

#### Host Species

- Rabbit

#### Reactivity

- Human

#### Applications

- IHC,IF

#### MW

- 8kD (Calculated)

#### Isotype

- IgG

### Recommended Dilution Ratios

IHC 1:50-200

IF 1:50-200

### Storage

#### Storage\*

-15°C to -25°C/1 year(Do not lower than -25°C)

#### Formulation

Liquid in PBS containing 50% glycerol, 0.5% BSA and 0.02% sodium azide.

### Basic Information

#### Clonality

Polyclonal

### Immunogen Information

#### Immunogen

Synthesized peptide derived from human PSPHL AA range: 21-71

#### Specificity

This antibody detects endogenous levels of PSPHL at Human

### Target Information

#### Gene name

PSPHP1 CO9 PSPHL

**Protein Name** PSPHL

**Organism**

**Gene ID**

**UniProt ID**

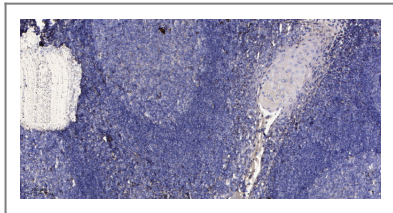
Human

[O15172](#);

**Tissue specificity** Highly expressed in FA (Fanconi's anemia) B-cells of complementation group A and Raji cells. Not expressed in B-cells of other FA complementation groups.

**Function** Catalytic activity:O-phospho-L(or D)-serine + H(2)O = L(or D)-serine + phosphate.,cofactor:Magnesium.,Disease:Defects in PSPH are the cause of 3-phosphoserine phosphatase deficiency (PSPHD)[MIM:172480]. Affected individuals have pre- and postnatal growth retardation, moderate psychomotor retardation and facial features suggestive of Williams syndrome.,Function:Catalyzes the last step in the biosynthesis of serine from carbohydrates. The reaction mechanism proceeds via the formation of a phosphoryl-enzyme intermediates.,pathway:Amino-acid biosynthesis; L-serine biosynthesis; L-serine from 3-phospho-D-glyceric acid: step 3/3.,similarity:Belongs to the serB family.,subunit:Homodimer.,

## Validation Data



Immunohistochemical analysis of paraffin-embedded human tonsil. 1, Antibody was diluted at 1:200(4° overnight). 2, Tris-EDTA,pH9.0 was used for antigen retrieval. 3,Secondary antibody was diluted at 1:200(room temperature, 30min).

## Contact information

Orders: order.cn@immunoway.com  
Support: support.cn@immunoway.com  
Telephone: 400-8787-807(China)  
Website: <http://www.immunoway.com.cn>  
Address: 2200 Ringwood Ave San Jose, CA 95131 USA



Please scan the QR code to access additional product information:  
**PSPHL Rabbit pAb**

For Research Use Only. Not for Use in Diagnostic Procedures.

[Antibody](#) | [ELISA Kits](#) | [Protein](#) | [Reagents](#)