

SC5AC Rabbit pAb

CatalogNo: YN3926

| Key Features

Host Species

- Rabbit

Reactivity

- Human, Mouse

Applications

- WB

MW

- 68kD (Calculated)

Isotype

- IgG

| Recommended Dilution Ratios

WB 1:500-2000

| Storage

Storage* -15°C to -25°C/1 year (Do not lower than -25°C)

Formulation Liquid in PBS containing 50% glycerol, 0.5% BSA and 0.02% sodium azide.

| Basic Information

Clonality Polyclonal

| Immunogen Information

Immunogen Synthesized peptide derived from human SC5AC AA range: 84-134

Specificity This antibody detects endogenous levels of SC5AC at Human/Mouse

| Target Information

Gene name SLC5A12 SMCT2

Protein Name SC5AC

Organism	Gene ID	UniProt ID
Human	159963 ;	Q1EHB4 ;
Mouse	241612 ;	Q49B93 ;

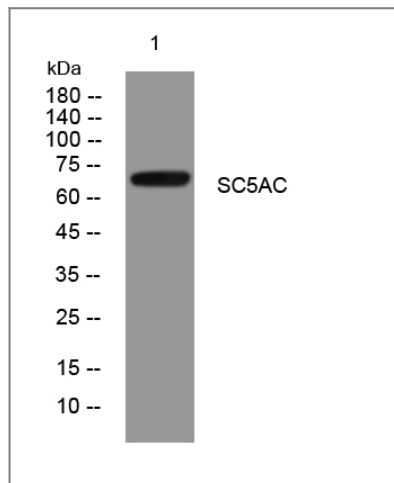
Cellular Localization

Apical cell membrane ; Multi-pass membrane protein . Detected at the brush border membrane of the kidney. Colocalizes with vimentin in Mueller cells (By similarity). .

Function

Function:Acts as an electroneutral and low-affinity sodium (Na(+))-dependent sodium-coupled solute transporter. Catalyzes the transport across the plasma membrane of many monocarboxylates such as lactate, pyruvate, nicotinate, propionate, butyrate and beta-D-hydroxybutyrate. May be responsible for the first step of reabsorption of monocarboxylates from the lumen of the proximal tubule of the kidney and the small intestine. May play also a role in monocarboxylates transport in the retina (By similarity). Mediates electroneutral uptake of lactate, with a stoichiometry of 2 Na(+) for each lactate.,miscellaneous:Cotransport of monocarboxylates and nicotinate strongly inhibited by ibuprofen, fenoprofen and ketoprofen.,similarity:Belongs to the sodium:solute symporter (SSF) (TC 2.A.21) family.,subcellular location:Detected at the brush border membrane of the kidney. Colocalizes with vimentin in Mueller cells.,

Validation Data



Western blot analysis of lysates from U2OS cells, primary antibody was diluted at 1:1000, 4°over night

Contact information

Orders: order.cn@immunoway.com
Support: support.cn@immunoway.com
Telephone: 400-8787-807(China)
Website: <http://www.immunoway.com.cn>
Address: 2200 Ringwood Ave San Jose, CA 95131 USA



Please scan the QR code to access additional product information:
SC5AC Rabbit pAb

