

## LAT1L Rabbit pAb

CatalogNo: YN3922

### | Key Features

#### Host Species

- Rabbit

#### Reactivity

- Human

#### Applications

- WB

#### MW

- 21kD (Calculated)

#### Isotype

- IgG

### | Recommended Dilution Ratios

WB 1:500-2000

### | Storage

**Storage\*** -15°C to -25°C/1 year(Do not lower than -25°C)

**Formulation** Liquid in PBS containing 50% glycerol, 0.5% BSA and 0.02% sodium azide.

### | Basic Information

**Clonality** Polyclonal

### | Immunogen Information

**Immunogen** Synthesized peptide derived from human LAT1L AA range: 118-168

**Specificity** This antibody detects endogenous levels of LAT1L at Human

### | Target Information

**Gene name** SLC7A5P2 IMAA MMAA

**Protein Name** LAT1L

**Organism**

**Gene ID**

**UniProt ID**

Human

[Q9GIP4](#);

**Cellular  
Localization**

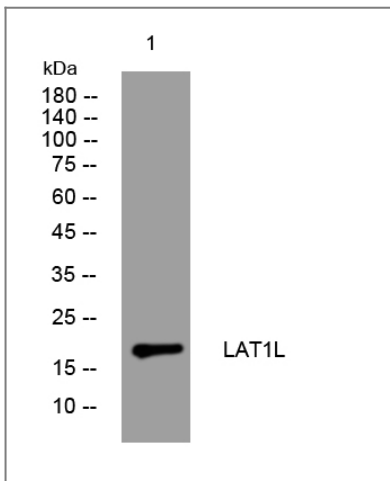
Membrane ; Multi-pass membrane protein .

**Tissue specificity** Expressed in peripheral blood mononuclear cells and lymphoid and myeloid cell lines.

**Function**

Caution: Could be the product of a pseudogene., induction: Up-regulated by concanavalin-A stimulation., similarity: Belongs to the amino acid-polyamine-organocation (APC) superfamily. L-type amino acid transporter (LAT) (TC 2.A.3.8) family., tissue specificity: Expressed in peripheral blood mononuclear cells and lymphoid and myeloid cell lines.,

## Validation Data



Western blot analysis of lysates from VEC cells, primary antibody was diluted at 1:1000, 4° over night

## Contact information

Orders: order.cn@immunoway.com  
Support: support.cn@immunoway.com  
Telephone: 400-8787-807(China)  
Website: <http://www.immunoway.com.cn>  
Address: 2200 Ringwood Ave San Jose, CA 95131 USA



Please scan the QR code to access additional product information:  
**LAT1L Rabbit pAb**