

HHLA2 Rabbit pAb

CatalogNo: YN3915

Key Features

Host Species

- Rabbit

Reactivity

- Human

Applications

- WB

MW

- 46kD (Calculated)

Isotype

- IgG

Recommended Dilution Ratios

WB 1:500-2000

Storage

Storage*

-15°C to -25°C/1 year(Do not lower than -25°C)

Formulation

Liquid in PBS containing 50% glycerol, 0.5% BSA and 0.02% sodium azide.

Basic Information

Clonality

Polyclonal

Immunogen Information

Immunogen

Synthesized peptide derived from human HHLA2 AA range: 165-215

Specificity

This antibody detects endogenous levels of HHLA2 at Human

Target Information

Gene name

HHLA2

Protein Name HHLA2

Organism

Gene ID

UniProt ID

Human

[11148;](#)

[Q9UM44;](#)

**Cellular
Localization**

Membrane ; Single-pass type I membrane protein .

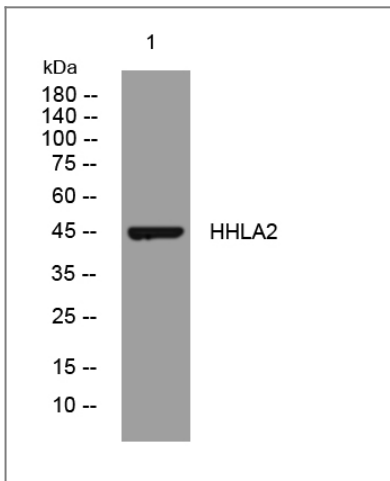
Tissue specificity

Expressed at high levels in colon, kidney, testis, lung and pancreas, and at lower levels in small intestine, liver and skeletal muscle. In immune cells, highly expressed in B-cells, dendritic cells and macrophages. Not detected in T-cells.

Function

sequence Caution:Translated as Trp.,similarity:Contains 1 Ig-like C1-type (immunoglobulin-like) domain.,similarity:Contains 2 Ig-like V-type (immunoglobulin-like) domains.,tissue specificity:Expressed in colon, small intestine, lung and kidney.,

Validation Data



Western blot analysis of lysates from 293T cells, primary antibody was diluted at 1:1000, 4°over night

Contact information

Orders: order.cn@immunoway.com
Support: support.cn@immunoway.com
Telephone: 400-8787-807(China)
Website: <http://www.immunoway.com.cn>
Address: 2200 Ringwood Ave San Jose, CA 95131 USA



Please scan the QR code
to access additional
product information:
HHLA2 Rabbit pAb