

## SPY1 Rabbit pAb

CatalogNo: YN3905

Comparable Abs 

### Key Features

**Host Species**

- Rabbit

**Reactivity**

- Human, Mouse

**Applications**

- IF, WB, CoIP

**MW**

- 35kD (Calculated)

**Isotype**

- IgG

### Recommended Dilution Ratios

**WB 1:500-2000****IP 1:50-100****IF 1:50-200**

### Storage

**Storage\*** -15°C to -25°C/1 year (Do not lower than -25°C)**Formulation** Liquid in PBS containing 50% glycerol, 0.5% BSA and 0.02% sodium azide.

### Basic Information

**Clonality** Polyclonal

### Immunogen Information

**Immunogen** Synthesized peptide derived from human SPY1 AA range: 129-179**Specificity** This antibody detects endogenous levels of SPY1 at Human/Mouse

### Target Information

**Gene name** SPRY1

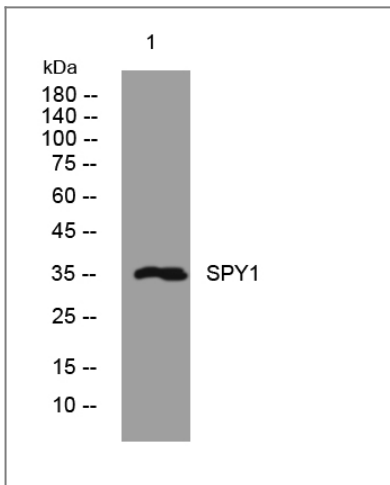
**Protein Name** SPY1

Organism	Gene ID	UniProt ID
Human	<a href="#">10252;</a>	<a href="#">O43609;</a>
Mouse	<a href="#">24063;</a>	<a href="#">Q9QXV9;</a>

**Cellular Localization** Cytoplasm. Membrane; Peripheral membrane protein. Found in the cytoplasm in unstimulated cells but is translocated to the membrane ruffles in cells stimulated with EGF (epidermal growth factor).

**Function** Domain:The Cys-rich domain is responsible for the localization of the protein to the membrane ruffles.,Function:May function as an antagonist of fibroblast growth factor (FGF) pathways and may negatively modulate respiratory organogenesis.,induction:By FGF signaling.,similarity:Belongs to the sprouty family.,similarity:Contains 1 SPR (sprouty) domain.,subcellular location:Found in the cytoplasm in unstimulated cells but is translocated to the membrane ruffles in cells stimulated with EGF (epidermal growth factor).,

## Validation Data



Western blot analysis of lysates from HEK293 cells, primary antibody was diluted at 1:1000, 4° over night

## Contact information

Orders: order.cn@immunoway.com  
Support: support.cn@immunoway.com  
Telephone: 400-8787-807(China)  
Website: <http://www.immunoway.com.cn>  
Address: 2200 Ringwood Ave San Jose, CA 95131 USA



Please scan the QR code to access additional product information:  
**SPY1 Rabbit pAb**

