

PSMD5 Rabbit pAb

CatalogNo: YN3903

Key Features

Host Species

- Rabbit

Reactivity

- Human, Mouse

Applications

- WB

MW

- 55kD (Calculated)

Isotype

- IgG

Recommended Dilution Ratios

WB 1:500-2000

Storage

Storage*

-15°C to -25°C/1 year (Do not lower than -25°C)

Formulation

Liquid in PBS containing 50% glycerol, 0.5% BSA and 0.02% sodium azide.

Basic Information

Clonality

Polyclonal

Immunogen Information

Immunogen

Synthesized peptide derived from human PSMD5 AA range: 424-474

Specificity

This antibody detects endogenous levels of PSMD5 at Human/Mouse

Target Information

Gene name

PSMD5 KIAA0072

Protein Name

PSMD5

Organism**Gene ID****UniProt ID**

Human

[5711;](#)[Q16401;](#)

Mouse

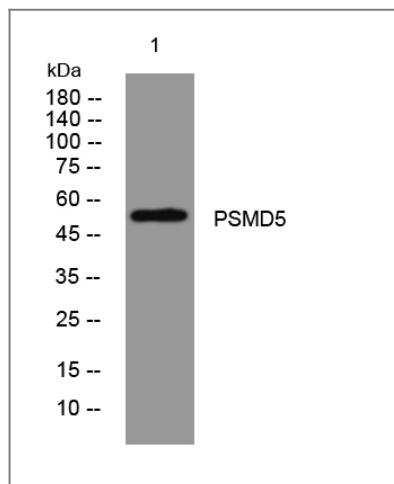
[66998;](#)[Q8BJY1;](#)**Cellular Localization**

proteasome complex,nucleoplasm,cytosol,proteasome regulatory particle, base subcomplex,proteasome accessory complex,

Function

Domain:Rich in dileucine repeats, which have been implicated in trafficking of a variety of transmembrane proteins.,Function:Belongs to the 26S multisubunit protease, which is required for ubiquitin-dependent proteolysis. Does not bind ubiquitin polymers.,similarity:Belongs to the proteasome subunit S5B family.,subunit:26S protease is composed of a multicatalytic protease (proteasome) and a regulatory ATPase complex. Both are multisubunit structures that associate in the presence of ATP to form the protease. Subunit S5B is part of the regulatory complex.,

Validation Data



Western blot analysis of lysates from U2OS cells, primary antibody was diluted at 1:1000, 4°over night

Contact information

Orders: order.cn@immunoway.com
Support: support.cn@immunoway.com
Telephone: 400-8787-807(China)
Website: <http://www.immunoway.com.cn>
Address: 2200 Ringwood Ave San Jose, CA 95131 USA



Please scan the QR code to access additional product information:
PSMD5 Rabbit pAb