

## BAGE1 Rabbit pAb

CatalogNo: YN3899

### Key Features

#### Host Species

- Rabbit

#### Reactivity

- Human

#### Applications

- IHC,IF

#### MW

- 5kD (Calculated)

#### Isotype

- IgG

### Recommended Dilution Ratios

IHC 1:50-200

IF 1:50-200

### Storage

#### Storage\*

-15°C to -25°C/1 year(Do not lower than -25°C)

#### Formulation

Liquid in PBS containing 50% glycerol, 0.5% BSA and 0.02% sodium azide.

### Basic Information

#### Clonality

Polyclonal

### Immunogen Information

#### Immunogen

Synthesized peptide derived from human BAGE1 AA range: 1-24

#### Specificity

This antibody detects endogenous levels of BAGE1 at Human

### Target Information

#### Gene name

BAGE BAGE1

**Protein Name** BAGE1

**Organism**

Human

**Gene ID**

[574;](#)

**UniProt ID**

[Q13072;](#)

**Cellular  
Localization**

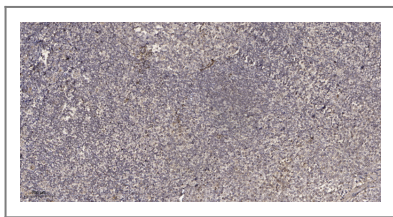
Secreted .

**Tissue specificity** Not expressed in normal tissues, except in testis. Expressed with significant proportion in melanomas, but also in tumors of various histological origins, such as bladder carcinomas, head and neck squamous cell carcinomas, lung and breast carcinomas. Not expressed in renal, colorectal and prostatic carcinomas, leukemias and lymphomas. More frequently expressed in metastatic melanomas than in primary melanomas.

**Function**

Alternative products:At least 6 different mRNAs, BAGE1a, BAGE1b, BAGE1c, BAGE1d, BAGE1e and BAGE1f, are produced by alternative splicing. They differ in the 3' region, but give rise to the same protein sequence,Function:Unknown. Antigen recognized on a melanoma by autologous cytolytic T-lymphocytes.,miscellaneous:The ancestral BAGE gene was generated by juxtacentromeric reshuffling of the MLL3 gene. The BAGE family was expanded by juxtacentromeric movement and/or acrocentric exchanges. BAGE family is composed of expressed genes that map to the juxtacentromeric regions of chromosomes 13 and 21 and of unexpressed gene fragments that scattered in the juxtacentromeric regions of several chromosomes, including chromosomes 9, 13, 18 and 21.,similarity:Belongs to the BAGE family.,tissue specificity:Not expressed in normal tissues, except in testis. Expressed with significant proportion in melanomas, but also in tumors of various histological origins, such as bladder carcinomas, head and neck squamous cell carcinomas, lung and breast carcinomas. Not expressed in renal, colorectal and prostatic carcinomas, leukemias and lymphomas. More frequently expressed in metastatic melanomas than in primary melanomas.,

## Validation Data



Immunohistochemical analysis of paraffin-embedded human tonsil. 1, Antibody was diluted at 1:200(4° overnight). 2, Tris-EDTA,pH9.0 was used for antigen retrieval. 3,Secondary antibody was diluted at 1:200(room temperature, 30min).

## Contact information

Orders: [order.cn@immunoway.com](mailto:order.cn@immunoway.com)  
Support: [support.cn@immunoway.com](mailto:support.cn@immunoway.com)  
Telephone: 400-8787-807(China)  
Website: <http://www.immunoway.com.cn>  
Address: 2200 Ringwood Ave San Jose, CA 95131 USA



Please scan the QR code to access additional product information:  
**BAGE1 Rabbit pAb**

