

IMPA1 Rabbit pAb

CatalogNo: YN3888

Key Features

Host Species

- Rabbit

Reactivity

- Human, Mouse, Rat

Applications

- WB

MW

- 30kD (Calculated)

Isotype

- IgG

Recommended Dilution Ratios

WB 1:500-2000

Storage

Storage* -15°C to -25°C/1 year (Do not lower than -25°C)

Formulation Liquid in PBS containing 50% glycerol, 0.5% BSA and 0.02% sodium azide.

Basic Information

Clonality Polyclonal

Immunogen Information

Immunogen Synthesized peptide derived from human IMPA1 AA range: 158-208

Specificity This antibody detects endogenous levels of IMPA1 at Human/Mouse/Rat

Target Information

Gene name IMPA1 IMPA

Protein Name

IMPA1

Organism**Gene ID****UniProt ID**

Human

[3612;](#)[P29218;](#)

Mouse

[O55023;](#)

Rat

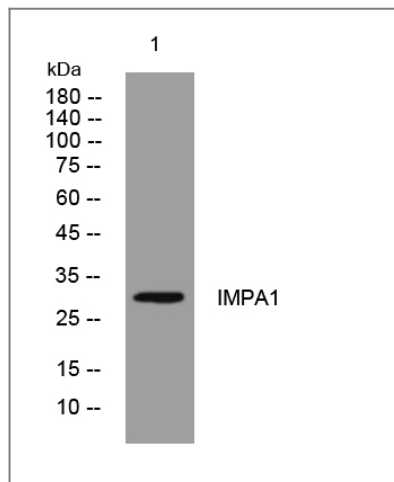
[83523;](#)[P97697;](#)**Cellular Localization**

Cytoplasm .

Function

Catalytic activity:Myo-inositol phosphate + H(2)O = myo-inositol + phosphate.,cofactor:Magnesium.,Disease:The blockade of inositol monophosphatase hydrolysis may underlie the anti-manic and anti-depressant actions of Li(+).,enzyme regulation:Inhibited by Li(+).,Function:Responsible for the provision of inositol required for synthesis of phosphatidylinositol and polyphosphoinositides and has been implicated as the pharmacological target for lithium action in brain.,pathway:Polyol metabolism; myo-inositol biosynthesis; myo-inositol from D-glucose 6-phosphate: step 2/2.,similarity:Belongs to the inositol monophosphatase family.,subunit:Homodimer.,

Validation Data



Western blot analysis of lysates from MDA-MB cells, primary antibody was diluted at 1:1000, 4° over night

Contact information

Orders: order.cn@immunoway.com
Support: support.cn@immunoway.com
Telephone: 400-8787-807(China)
Website: <http://www.immunoway.com.cn>
Address: 2200 Ringwood Ave San Jose, CA 95131 USA



Please scan the QR code to access additional product information:
IMPA1 Rabbit pAb

