

DHX32 Rabbit pAb

CatalogNo: YN3886

Key Features

Host Species

- Rabbit

Reactivity

- Human, Mouse

Applications

- WB

MW

- 82kD (Calculated)

Isotype

- IgG

Recommended Dilution Ratios

WB 1:500-2000

Storage

Storage* -15°C to -25°C/1 year (Do not lower than -25°C)

Formulation Liquid in PBS containing 50% glycerol, 0.5% BSA and 0.02% sodium azide.

Basic Information

Clonality Polyclonal

Immunogen Information

Immunogen Synthesized peptide derived from human DHX32 AA range: 218-268

Specificity This antibody detects endogenous levels of DHX32 at Human/Mouse

Target Information

Gene name DHX32 DDX32

Protein Name DHX32

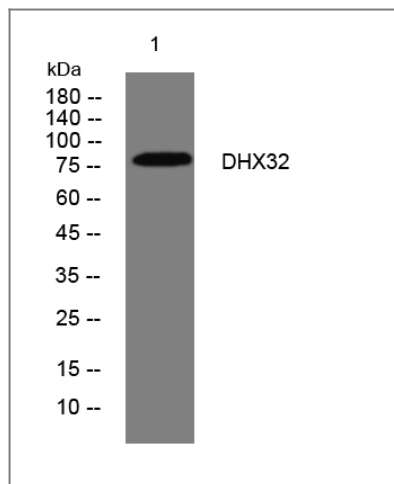
Organism	Gene ID	UniProt ID
Human	55760;	Q7L7V1;
Mouse	101437;	Q8BZS9;

Cellular Localization Nucleus . Mitochondrion .

Tissue specificity Expressed in lymphoid tissues (at protein level). Expressed in brain, heart, skeletal muscle, colon, thymus, spleen, kidney, liver, small intestine, placenta, lung, lymphoid tissues and blood leukocytes.

Function induction:Up-regulated by ionomycin in T lymphocytes. Down-regulated in acute lymphoblastic leukemia.,similarity:Belongs to the DEAD box helicase family. DEAH subfamily.,similarity:Contains 1 helicase ATP-binding domain.,similarity:Contains 1 helicase C-terminal domain.,tissue specificity:Expressed in lymphoid tissues (at protein level). Expressed in brain, heart, skeletal muscle, colon, thymus, spleen, kidney, liver, small intestine, placenta, lung, lymphoid tissues and blood leukocytes.,

Validation Data



Western blot analysis of lysates from 293T cells, primary antibody was diluted at 1:1000, 4° over night

Contact information

Orders: order.cn@immunoway.com
Support: support.cn@immunoway.com
Telephone: 400-8787-807(China)
Website: <http://www.immunoway.com.cn>
Address: 2200 Ringwood Ave San Jose, CA 95131 USA



Please scan the QR code to access additional product information:
DHX32 Rabbit pAb

