

H90B3 Rabbit pAb

CatalogNo: YN3877

Key Features

Host Species

- Rabbit

Reactivity

- Human

Applications

- WB

MW

- 66kD (Calculated)

Isotype

- IgG

Storage

Storage* -15°C to -25°C/1 year(Do not lower than -25°C)

Formulation Liquid in PBS containing 50% glycerol, 0.5% BSA and 0.02% sodium azide.

Recommended Dilution Ratios

WB 1:500-2000

Basic Information

Clonality Polyclonal

Immunogen Information

Immunogen Synthesized peptide derived from human H90B3 AA range: 511-561

Specificity This antibody detects endogenous levels of H90B3 at Human

Target Information

Gene name HSP90AB3P HSP90BC

Protein Name H90B3

Organism

Gene ID

UniProt ID

Human

[Q58FF7](#);

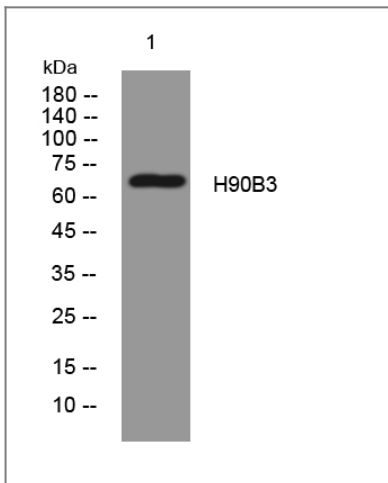
Cellular Localization

Cytoplasm .

Function

Caution:Could be the product of a pseudogene.,Function:Molecular chaperone.,similarity:Belongs to the heat shock protein 90 family.,

Validation Data



Western blot analysis of lysates from MDA-MB cells, primary antibody was diluted at 1:1000, 4°over night

Contact information

Orders: order.cn@immunoway.com
Support: support.cn@immunoway.com
Telephone: 400-8787-807(China)
Website: <http://www.immunoway.com.cn>
Address: 2200 Ringwood Ave San Jose, CA 95131 USA



Please scan the QR code to access additional product information:
H90B3 Rabbit pAb

For Research Use Only. Not for Use in Diagnostic Procedures.

[Antibody](#) | [ELISA Kits](#) | [Protein](#) | [Reagents](#)