

DPM3 Rabbit pAb

CatalogNo: YN3861

Key Features

Host Species

- Rabbit

Reactivity

- Human, Mouse

Applications

- IHC, IF

MW

- 10kD (Calculated)

Isotype

- IgG

Recommended Dilution Ratios

IHC 1:50-200

IF 1:50-200

Storage

Storage*

-15°C to -25°C/1 year (Do not lower than -25°C)

Formulation

Liquid in PBS containing 50% glycerol, 0.5% BSA and 0.02% sodium azide.

Basic Information

Clonality

Polyclonal

Immunogen Information

Immunogen

Synthesized peptide derived from human DPM3 AA range: 14-64

Specificity

This antibody detects endogenous levels of DPM3 at Human/Mouse

Target Information

Gene name

DPM3

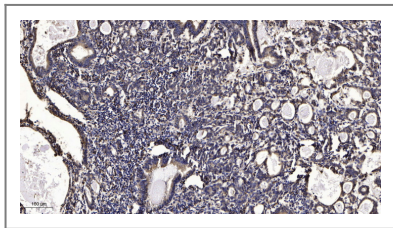
Protein Name DPM3

Organism	Gene ID	UniProt ID
Human	54344;	Q9P2X0;
Mouse	68563;	Q9D1Q4;

Cellular Localization Endoplasmic reticulum membrane; Multi-pass membrane protein.

Function Function:Stabilizer subunit of the dolichol-phosphate-mannose synthase complex.,online information:GlycoGene database,similarity:Belongs to the DPM3 family.,subunit:Composed of three subunits; DPM1, DPM2 and DPM3. Associated with DPM1 via its C-terminal domain and with DPM2 via its N-terminal portion.,

| Validation Data



Immunohistochemical analysis of paraffin-embedded human Gastric adenocarcinoma. 1, Antibody was diluted at 1:200(4° overnight). 2, Tris-EDTA,pH9.0 was used for antigen retrieval. 3,Secondary antibody was diluted at 1:200(room temperature, 45min).

| Contact information

Orders: order.cn@immunoway.com
Support: support.cn@immunoway.com
Telephone: 400-8787-807(China)
Website: <http://www.immunoway.com.cn>
Address: 2200 Ringwood Ave San Jose, CA 95131 USA



Please scan the QR code to access additional product information:
DPM3 Rabbit pAb

For Research Use Only. Not for Use in Diagnostic Procedures.

[Antibody](#) | [ELISA Kits](#) | [Protein](#) | [Reagents](#)