

## MS4A3 Rabbit pAb

CatalogNo: YN3857

### | Key Features

#### Host Species

- Rabbit

#### Reactivity

- Human, Mouse

#### Applications

- WB

#### MW

- 24kD (Calculated)

#### Isotype

- IgG

### | Recommended Dilution Ratios

WB 1:500-2000

### | Storage

**Storage\*** -15°C to -25°C/1 year (Do not lower than -25°C)

**Formulation** Liquid in PBS containing 50% glycerol, 0.5% BSA and 0.02% sodium azide.

### | Basic Information

**Clonality** Polyclonal

### | Immunogen Information

**Immunogen** Synthesized peptide derived from human MS4A3 AA range: 101-151

**Specificity** This antibody detects endogenous levels of MS4A3 at Human/Mouse

### | Target Information

**Gene name** MS4A3 CD20L HTM4

**Protein Name** MS4A3

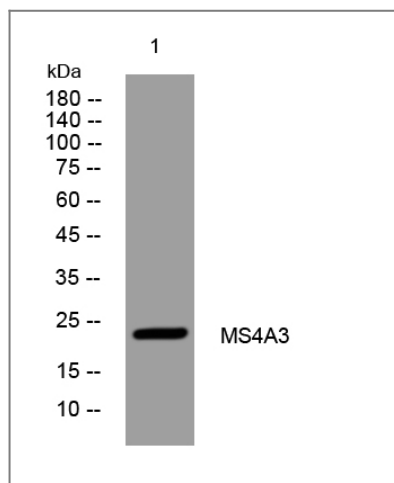
Organism	Gene ID	UniProt ID
Human	<a href="#">932;</a>	<a href="#">Q96HJ5;</a>
Mouse	<a href="#">170813;</a>	<a href="#">Q920C4;</a>

**Cellular Localization** Endomembrane system ; Multi-pass membrane protein . Cytoplasm, perinuclear region . Located in the perinuclear area.

**Tissue specificity** Expressed specifically in hematopoietic cells and tissues.

**Function** Caution:The sequence shown here is derived from an Ensembl automatic analysis pipeline and should be considered as preliminary data.,Domain:The C-terminal region is required for binding to CDKN3-CDK2 complexes and the modulation of CDKN3 activity.,Function:Hematopoietic modulator for the G1-S cell cycle transition. Modulates the level of phosphorylation of cyclin-dependent kinase 2 (CDK2) through its direct binding to cyclin-dependent kinase inhibitor 3 (CDKN3/KAP).,similarity:Belongs to the MS4A family.,subcellular location:Located in the perinuclear area.,subunit:Interacts with CDKN3. Interacts with CDKN3-CDK2 complexes through its binding to CDKN3; this interaction facilitates dissociation of cyclin A from CDKN3-CDK2 complexes.,tissue specificity:Expressed specifically in hematopoietic cells and tissues.,

## Validation Data



Western blot analysis of lysates from KB cells, primary antibody was diluted at 1:1000, 4° over night

## Contact information

Orders: order.cn@immunoway.com  
Support: support.cn@immunoway.com  
Telephone: 400-8787-807(China)  
Website: <http://www.immunoway.com.cn>  
Address: 2200 Ringwood Ave San Jose, CA 95131 USA



Please scan the QR code to access additional product information:  
**MS4A3 Rabbit pAb**

