

CJ099 Rabbit pAb

CatalogNo: YN3815

Key Features

Host Species

- Rabbit

Reactivity

- Human,Rat,Mouse,

Applications

- IHC,IF

MW

- 9kD (Calculated)

Isotype

- IgG

Recommended Dilution Ratios

IHC 1:50-200

IF 1:50-200

Storage

Storage*

-15°C to -25°C/1 year(Do not lower than -25°C)

Formulation

Liquid in PBS containing 50% glycerol, 0.5% BSA and 0.02% sodium azide.

Basic Information

Clonality

Polyclonal

Immunogen Information

Immunogen

Synthesized peptide derived from human CJ099 AA range: 19-69

Specificity

This antibody detects endogenous levels of CJ099 at Human

Target Information

Gene name

C10orf99 UNQ1833/PRO3446

Protein Name CJ099

Organism

Gene ID

UniProt ID

Human

[387695](#);

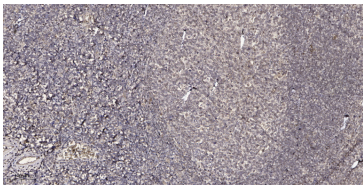
[Q6UWK7](#);

**Cellular
Localization**

Secreted .

Tissue specificity Expressed at high levels in colon, and cervix and at moderate level in tonsil (PubMed:25585381, PubMed:28900043). Highly reduced expression in primary colon cancer tissues compared with that in adjacent tissues (PubMed:25351403). Highest levels of expression detected in stomach and colon; expressed in epithelium of skin and esophagus, and in some tumor and/or tumor adjacent tissues (TAT), including TAT of esophagus cancer, hepatocellular carcinoma (HCC), squamous cell carcinoma (SCC), basal cell carcinoma (BCC) and invasive ductal carcinoma (IDC) tissues (at protein level) (PubMed:25585381).

| Validation Data



Immunohistochemical analysis of paraffin-embedded human tonsil. 1, Antibody was diluted at 1:200(4° overnight). 2, Tris-EDTA,pH9.0 was used for antigen retrieval. 3,Secondary antibody was diluted at 1:200(room temperature, 30min).

| Contact information

Orders: order.cn@immunoway.com
Support: support.cn@immunoway.com
Telephone: 400-8787-807(China)
Website: <http://www.immunoway.com.cn>
Address: 2200 Ringwood Ave San Jose, CA 95131 USA



Please scan the QR code
to access additional
product information:
CJ099 Rabbit pAb

For Research Use Only. Not for Use in Diagnostic Procedures.

[Antibody](#) | [ELISA Kits](#) | [Protein](#) | [Reagents](#)