

CAR18 Rabbit pAb

CatalogNo: YN3811

Key Features

Host Species

- Rabbit

Reactivity

- Human

Applications

- IHC,IF

MW

- 10kD (Calculated)

Isotype

- IgG

Recommended Dilution Ratios

IHC 1:50-200

IF 1:50-200

Storage

Storage*

-15°C to -25°C/1 year(Do not lower than -25°C)

Formulation

Liquid in PBS containing 50% glycerol, 0.5% BSA and 0.02% sodium azide.

Basic Information

Clonality

Polyclonal

Immunogen Information

Immunogen

Synthesized peptide derived from human CAR18 AA range: 30-110

Specificity

This antibody detects endogenous levels of CAR18 at Human

Target Information

Gene name

CARD18 ICEBERG UNQ5804/PRO19611

Protein Name CAR18

Organism

Human

Gene ID

[59082](#);

UniProt ID

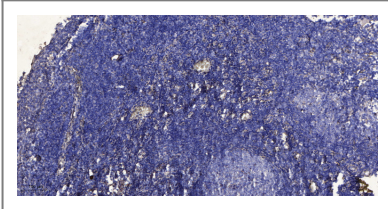
[P57730](#);

Tissue specificity Primarily expressed in the heart and placenta.

Function

Function:Inhibits generation of IL-1-beta by interacting with caspase-1 and preventing its association with RIP2.,similarity:Contains 1 CARD domain.,subunit:Interacts with pro-CASP1. Interacts with CARD8.,tissue specificity:Primarily expressed in the heart and placenta.,

| Validation Data



Immunohistochemical analysis of paraffin-embedded human tonsil. 1, Antibody was diluted at 1:200(4° overnight). 2, Tris-EDTA,pH9.0 was used for antigen retrieval. 3,Secondary antibody was diluted at 1:200(room temperature, 30min).

| Contact information

Orders: order.cn@immunoway.com
Support: support.cn@immunoway.com
Telephone: 400-8787-807(China)
Website: <http://www.immunoway.com.cn>
Address: 2200 Ringwood Ave San Jose, CA 95131 USA



Please scan the QR code to access additional product information:

CAR18 Rabbit pAb

For Research Use Only. Not for Use in Diagnostic Procedures.

[Antibody](#) | [ELISA Kits](#) | [Protein](#) | [Reagents](#)