

MYPR Rabbit pAb

CatalogNo: YN3788

Key Features

Host Species

- Rabbit

Reactivity

- Human, Mouse, Rat

Applications

- WB

MW

- 30kD (Calculated)

Isotype

- IgG

Recommended Dilution Ratios

WB 1:500-2000

Storage

Storage* -15°C to -25°C/1 year (Do not lower than -25°C)

Formulation Liquid in PBS containing 50% glycerol, 0.5% BSA and 0.02% sodium azide.

Basic Information

Clonality Polyclonal

Immunogen Information

Immunogen Synthesized peptide derived from human MYPR AA range: 206-256

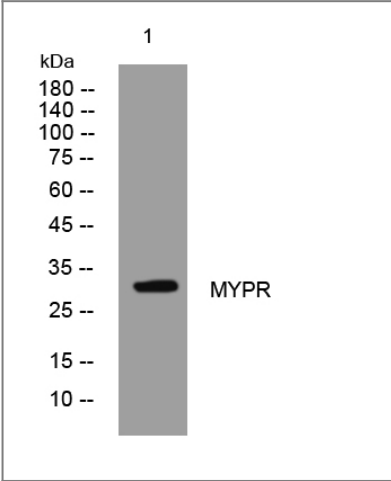
Specificity This antibody detects endogenous levels of MYPR at Human/Mouse/Rat

Target Information

Gene name PLP1 PLP

Protein Name	MYPR		
	Organism	Gene ID	UniProt ID
	Human	5354;	P60201;
	Mouse	18823;	P60202;
	Rat	24943;	P60203;
Cellular Localization	Cell membrane ; Multi-pass membrane protein . Myelin membrane . Colocalizes with SIRT2 in internodal regions, at paranodal axoglial junction and Schmidt-Lanterman incisures of myelin sheat. .		
Function	Disease:Defects in PLP1 are the cause of leukodystrophy hypomyelinating type 1 (HLD1) [MIM:312080]; also known as Pelizaeus-Merzbacher disease. HLD1 is an X-linked recessive dysmyelinating disorder of the central nervous system in which myelin is not formed properly. It is characterized clinically by nystagmus, spastic quadriplegia, ataxia, and developmental delay.,Disease:Defects in PLP1 are the cause of spastic paraplegia X-linked type 2 (SPG2) [MIM:312920]. SPG2 is characterized by spastic gait and hyperreflexia. In some patients, complicating features include nystagmus, dysarthria, sensory disturbance, mental retardation, optic atrophy.,Function:This is the major myelin protein from the central nervous system. It plays an important role in the formation or maintenance of the multilamellar structure of myelin.,similarity:Belongs to the myelin proteolipid protein family.,		

Validation Data



Western blot analysis of lysates from U2OS cells, primary antibody was diluted at 1:1000, 4°over night

Contact information

Orders: order.cn@immunoway.com
Support: support.cn@immunoway.com
Telephone: 400-8787-807(China)
Website: <http://www.immunoway.com.cn>
Address: 2200 Ringwood Ave San Jose, CA 95131 USA



Please scan the QR code
to access additional
product information:
MYPR Rabbit pAb

For Research Use Only. Not for Use in Diagnostic Procedures.

[Antibody](#) | [ELISA Kits](#) | [Protein](#) | [Reagents](#)