

## RABX5 Rabbit pAb

CatalogNo: YN3784

### Key Features

#### Host Species

- Rabbit

#### Reactivity

- Human, Mouse

#### Applications

- WB

#### MW

- 78kD (Calculated)

#### Isotype

- IgG

### Recommended Dilution Ratios

WB 1:500-2000

### Storage

**Storage\*** -15°C to -25°C/1 year (Do not lower than -25°C)

**Formulation** Liquid in PBS containing 50% glycerol, 0.5% BSA and 0.02% sodium azide.

### Basic Information

**Clonality** Polyclonal

### Immunogen Information

**Immunogen** Synthesized peptide derived from human RABX5 AA range: 291-341

**Specificity** This antibody detects endogenous levels of RABX5 at Human/Mouse

### Target Information

**Gene name** RABGEF1 RABEX5

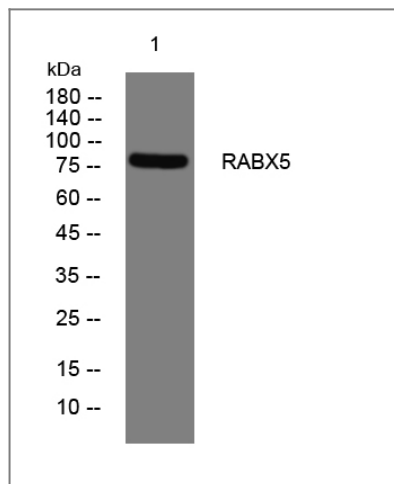
**Protein Name** RABX5

Organism	Gene ID	UniProt ID
Human	<a href="#">27342;</a>	<a href="#">Q9UJ41;</a>
Mouse	<a href="#">56715;</a>	<a href="#">Q9JLM13;</a>

**Cellular Localization** Cytoplasm . Early endosome . Recycling endosome .

**Function** Function:Rab effector protein acting as linker between gamma-adaptin, RAB4A or RAB5A. Involved in endocytic membrane fusion and membrane trafficking of recycling endosomes. Stimulates nucleotide exchange on RAB5A. Can act as a ubiquitin ligase.,PTM:Monoubiquitinated.,similarity:Contains 1 A20-type zinc finger.,similarity:Contains 1 VPS9 domain.,subunit:Heterodimer with RABEP1. The heterodimer binds RAB4A and RAB5A that have been activated by GTP-binding. Interacts with RAB21, and with 100-fold lower affinity also with RAB22. Binds TSC2, GGA1, GGA2, GGA3, AP1G1 and AP1G2. Interacts with ubiquitinated EGFR.,

## Validation Data



Western blot analysis of lysates from PC-12 cells, primary antibody was diluted at 1:1000, 4° over night

## Contact information

Orders: order.cn@immunoway.com  
Support: support.cn@immunoway.com  
Telephone: 400-8787-807(China)  
Website: <http://www.immunoway.com.cn>  
Address: 2200 Ringwood Ave San Jose, CA 95131 USA



Please scan the QR code to access additional product information:  
**RABX5 Rabbit pAb**

