

WASH6 Rabbit pAb

CatalogNo: YN3699

Key Features

Host Species

- Rabbit

Reactivity

- Human

Applications

- WB

MW

- 49kD (Calculated)

Isotype

- IgG

Recommended Dilution Ratios

WB 1:500-2000

Storage

Storage* -15°C to -25°C/1 year(Do not lower than -25°C)

Formulation Liquid in PBS containing 50% glycerol, 0.5% BSA and 0.02% sodium azide.

Basic Information

Clonality Polyclonal

Immunogen Information

Immunogen Synthesized peptide derived from human WASH6 AA range: 181-231

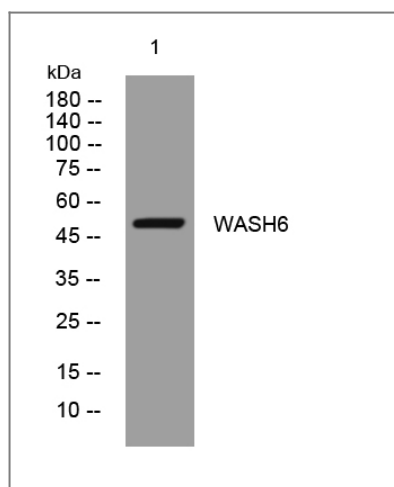
Specificity This antibody detects endogenous levels of WASH6 at Human

Target Information

Gene name WASH6P CXYorf1 FAM39A

Protein Name	WASH6		
	Organism	Gene ID	UniProt ID
	Human		Q9NQA3 ;
Cellular Localization	Early endosome membrane . Recycling endosome membrane . Localization to the endosome membrane is mediated via its interaction with WASHC2. .		

Validation Data



Western blot analysis of lysates from Hela cells, primary antibody was diluted at 1:1000, 4° over night

Contact information

Orders: order.cn@immunoway.com
 Support: support.cn@immunoway.com
 Telephone: 400-8787-807(China)
 Website: <http://www.immunoway.com.cn>
 Address: 2200 Ringwood Ave San Jose, CA 95131 USA



Please scan the QR code to access additional product information:
WASH6 Rabbit pAb

For Research Use Only. Not for Use in Diagnostic Procedures.

[Antibody](#) | [ELISA Kits](#) | [Protein](#) | [Reagents](#)