

## PTBP3 Rabbit pAb

CatalogNo: YN3670

### Key Features

#### Host Species

- Rabbit

#### Reactivity

- Human, Mouse, Rat

#### Applications

- WB

#### MW

- 61kD (Calculated)

#### Isotype

- IgG

### Recommended Dilution Ratios

WB 1:500-2000

### Storage

**Storage\*** -15°C to -25°C/1 year (Do not lower than -25°C)

**Formulation** Liquid in PBS containing 50% glycerol, 0.5% BSA and 0.02% sodium azide.

### Basic Information

**Clonality** Polyclonal

### Immunogen Information

**Immunogen** Synthesized peptide derived from human PTBP3 AA range: 103-153

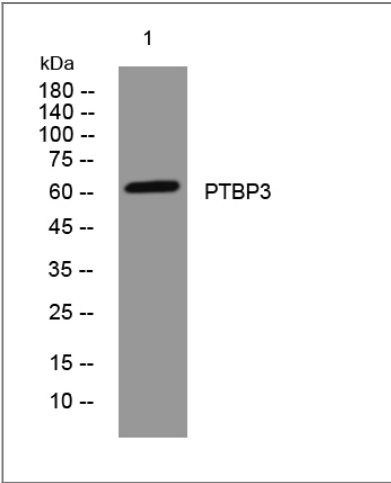
**Specificity** This antibody detects endogenous levels of PTBP3 at Human/Mouse/Rat

### Target Information

**Gene name** PTBP3 ROD1

<b>Protein Name</b>	PTBP3		
	<b>Organism</b>	<b>Gene ID</b>	<b>UniProt ID</b>
	Human	<a href="#">9991;</a>	<a href="#">O95758;</a>
	Mouse	<a href="#">230257;</a>	<a href="#">Q8BHD7;</a>
	Rat	<a href="#">83515;</a>	<a href="#">Q9Z118;</a>
<b>Cellular Localization</b>	nucleus,		
<b>Tissue specificity</b>	Expressed in several hematopoietic cell lines examined.		
<b>Function</b>	Function:May play a role in regulation of differentiation. In vitro, binds RNA, preferentially to both poly(G) and poly(U). Overexpressed, blocks differentiation of K562 leukemia cells following treatment with phorbol esters or sodium butyrate without affecting proliferation.,similarity:Contains 4 RRM (RNA recognition motif) domains.,tissue specificity:Expressed in several hematopoietic cell lines examined.,		

| Validation Data



Western blot analysis of lysates from SW480 cells, primary antibody was diluted at 1:1000, 4°over night

| Contact information

Orders: order.cn@immunoway.com  
Support: support.cn@immunoway.com  
Telephone: 400-8787-807(China)  
Website: http://www.immunoway.com.cn  
Address: 2200 Ringwood Ave San Jose, CA 95131 USA



Please scan the QR code to access additional product information:  
**PTBP3 Rabbit pAb**

