

CE025 Rabbit pAb

CatalogNo: YN3646

Key Features

Host Species

- Rabbit

Reactivity

- Human,Rat,Mouse,

Applications

- WB

MW

- 96kD (Calculated)

Isotype

- IgG

Recommended Dilution Ratios

WB 1:500-2000

Storage

Storage* -15°C to -25°C/1 year(Do not lower than -25°C)

Formulation Liquid in PBS containing 50% glycerol, 0.5% BSA and 0.02% sodium azide.

Basic Information

Clonality Polyclonal

Immunogen Information

Immunogen Synthesized peptide derived from human CE025 AA range: 369-419

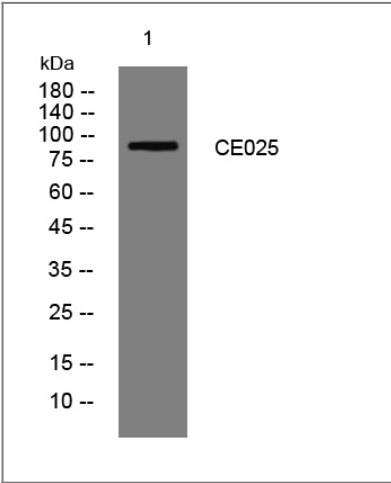
Specificity This antibody detects endogenous levels of CE025 at Human

Target Information

Gene name C5orf25

Protein Name	CE025		
	Organism	Gene ID	UniProt ID
	Human	375484;	Q8NDZ2;
Cellular Localization	[Isoform 5]: Cytoplasm . Cytoplasm, myofibril, sarcomere .		
Tissue specificity	[Isoform 5]: Skeletal muscle.		
Function	PTM:Phosphorylated upon DNA damage, probably by ATM or ATR.,		

| Validation Data



Western blot analysis of lysates from 3T3 cells, primary antibody was diluted at 1:1000, 4°over night

| Contact information

Orders:

order.cn@immunoway.com

Support:

support.cn@immunoway.com

Telephone:

400-8787-807(China)

Website:

http://www.immunoway.com.cn

Address:

2200 Ringwood Ave San Jose, CA 95131 USA



Please scan the QR code to access additional product information:
CE025 Rabbit pAb