

## DHSO Rabbit pAb

CatalogNo: YN3626

Comparable Abs 

### Key Features

#### Host Species

- Rabbit

#### Reactivity

- Human, Mouse, Rat

#### Applications

- WB, IP

#### MW

- 39kD (Calculated)

#### Isotype

- IgG

### Recommended Dilution Ratios

WB 1:500-2000

IP 1:200

### Storage

**Storage\*** -15°C to -25°C/1 year (Do not lower than -25°C)**Formulation** Liquid in PBS containing 50% glycerol, 0.5% BSA and 0.02% sodium azide.

### Basic Information

**Clonality** Polyclonal

### Immunogen Information

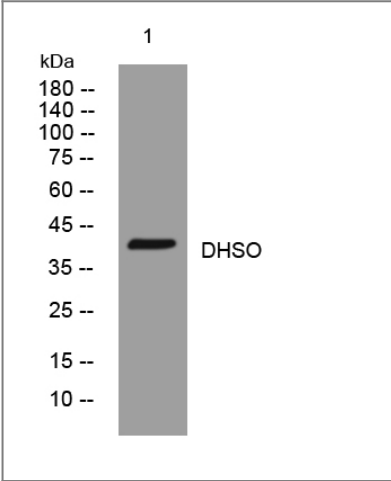
**Immunogen** Synthesized peptide derived from human DHSO**Specificity** This antibody detects endogenous levels of DHSO at Human/Mouse/Rat

### Target Information

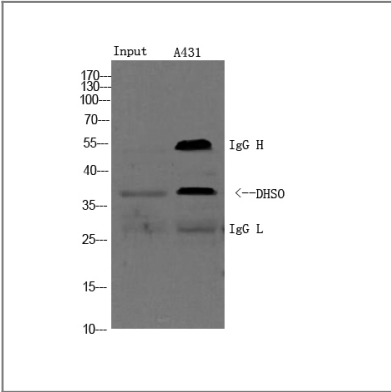
**Gene name** SORD

Protein Name	DHSO		
	Organism	Gene ID	UniProt ID
	Human	<a href="#">6652;</a>	<a href="#">Q00796;</a>
	Mouse	<a href="#">20322;</a>	<a href="#">Q64442;</a>
	Rat	<a href="#">24788;</a>	<a href="#">P27867;</a>
Cellular Localization	Mitochondrion membrane ; Peripheral membrane protein . Cell projection, cilium, flagellum . Associated with mitochondria of the midpiece and near the plasma membrane in the principal piece of the flagellum. Also found in the epididymosome, secreted by the epididymal epithelium and that transfers proteins from the epididymal fluid to the sperm surface. .		
Tissue specificity	Expressed in liver (PubMed:3365415). Expressed in kidney and epithelial cells of both benign and malignant prostate tissue. Expressed in epididymis (at protein level).		
Function	Catalytic activity:L-iditol + NAD(+) = L-sorbose + NADH.,cofactor: Binds 1 zinc ion per subunit.,similarity: Belongs to the zinc-containing alcohol dehydrogenase family.,subunit: Homotetramer.,		

| Validation Data



Western blot analysis of lysates from U2OS cells, primary antibody was diluted at 1:1000, 4°over night



1) Input: Hela Lysate 2) IP product: IP dilute 1: 200 Western blot analysis: primary antibody : 1:2000 Secondary antibody: Goat anti-Mouse IgG(RS0002), 1: 5000

## | Contact information

Orders: order.cn@immunoway.com  
Support: support.cn@immunoway.com  
Telephone: 400-8787-807(China)  
Website: <http://www.immunoway.com.cn>  
Address: 2200 Ringwood Ave San Jose, CA 95131 USA



Please scan the QR code  
to access additional  
product information:  
**DHSO Rabbit pAb**

---

For Research Use Only. Not for Use in Diagnostic Procedures.

[Antibody](#) | [ELISA Kits](#) | [Protein](#) | [Reagents](#)