

## ZIM2 Rabbit pAb

CatalogNo: YN3616

### | Key Features

#### Host Species

- Rabbit

#### Reactivity

- Human

#### Applications

- WB

#### MW

- 58kD (Calculated)

#### Isotype

- IgG

### | Recommended Dilution Ratios

WB 1:500-2000

### | Storage

**Storage\*** -15°C to -25°C/1 year(Do not lower than -25°C)

**Formulation** Liquid in PBS containing 50% glycerol, 0.5% BSA and 0.02% sodium azide.

### | Basic Information

**Clonality** Polyclonal

### | Immunogen Information

**Immunogen** Synthesized peptide derived from human ZIM2 AA range: 50-100

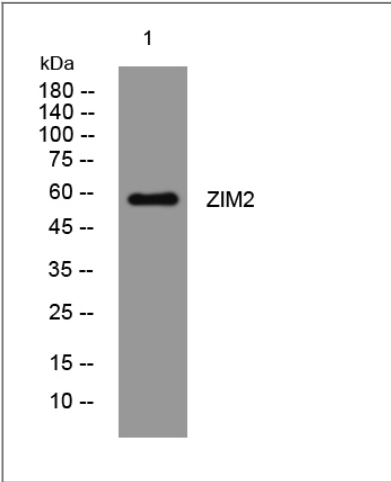
**Specificity** This antibody detects endogenous levels of ZIM2 at Human

### | Target Information

**Gene name** ZIM2 ZNF656

Protein Name	ZIM2		
	Organism	Gene ID	UniProt ID
	Human	<a href="#">23619</a> ;	<a href="#">Q9NZV7</a> ;
Cellular Localization	Nucleus .		
Tissue specificity	Highest levels of expression in adult testis; modest levels in fetal kidney and brain.		
Function	<p>Function:Induces apoptosis in cooperation with SIAH1A. Acts as a mediator between TP53/p53 and BAX in a neuronal death pathway that is activated by DNA damage. Acts synergistically with TRAF2 and inhibits TNF induced apoptosis through activation of NF-kappa-B (By similarity). Possesses a tumor suppressing activity in glioma cells.,Function:May be involved in transcriptional regulation.,similarity:Belongs to the krueppel C2H2-type zinc-finger protein family.,similarity:Contains 1 KRAB domain.,similarity:Contains 1 SCAN box domain.,similarity:Contains 12 C2H2-type zinc fingers.,similarity:Contains 5 C2H2-type zinc fingers.,subunit:Homodimer. Interacts with SIAH1A and SIAH2. Interacts with TRAF2.,tissue specificity:Brain, glial cells, astrocytes, embryo, placenta, testis, ovary and utreus. In the placenta it is found in the layer of villous cytotrophoblast cells while in the ovary it is found in the cells of the ovarian stroma including the thecal layers around the follicles. Expression is highly repressed in glioma cell lines.,tissue specificity:Highest levels of expression in adult testis; modest levels in fetal kidney and brain.,</p>		

| Validation Data



Western blot analysis of lysates from Hela cells, primary antibody was diluted at 1:1000, 4°over night

| Contact information

Orders: order.cn@immunoway.com  
Support: support.cn@immunoway.com  
Telephone: 400-8787-807(China)  
Website: <http://www.immunoway.com.cn>  
Address: 2200 Ringwood Ave San Jose, CA 95131 USA



Please scan the QR code  
to access additional  
product information:  
**ZIM2 Rabbit pAb**

---

For Research Use Only. Not for Use in Diagnostic Procedures.

[Antibody](#) | [ELISA Kits](#) | [Protein](#) | [Reagents](#)