

ZUFSP Rabbit pAb

CatalogNo: YN3612

Key Features

Host Species

- Rabbit

Reactivity

- Human, Mouse, Rat

Applications

- WB

MW

- 64kD (Calculated)

Isotype

- IgG

Recommended Dilution Ratios

WB 1:500-2000

Storage

Storage* -15°C to -25°C/1 year (Do not lower than -25°C)

Formulation Liquid in PBS containing 50% glycerol, 0.5% BSA and 0.02% sodium azide.

Basic Information

Clonality Polyclonal

Immunogen Information

Immunogen Synthesized peptide derived from human ZUFSP AA range: 89-139

Specificity This antibody detects endogenous levels of ZUFSP at Human/Mouse/Rat

Target Information

Gene name ZUFSP C6orf113

Protein Name ZUFSP

Organism	Gene ID	UniProt ID
Human	221302;	Q96AP4;
Mouse	72580;	Q3T9Z9;
Rat	294390;	Q5U2S3;

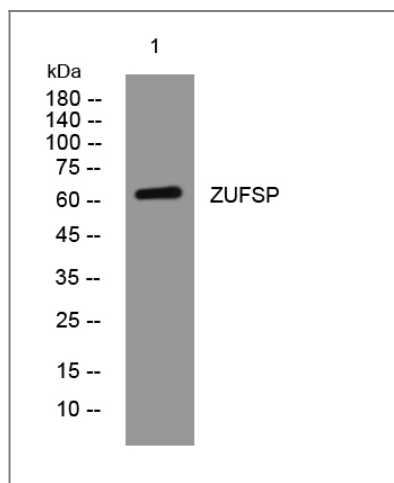
Cellular Localization

Cytoplasm . Nucleus . Mostly present in the nuclear fraction. Localizes to DNA lesions. .

Function

Caution:Although related to the Ufm1-specific proteases, it lacks the conserved His active site, suggesting that it is probably inactive.,similarity:Contains 3 C2H2-type zinc fingers.,

Validation Data



Western blot analysis of lysates from HuvEc cells, primary antibody was diluted at 1:1000, 4°over night

Contact information

Orders: order.cn@immunoway.com
Support: support.cn@immunoway.com
Telephone: 400-8787-807(China)
Website: <http://www.immunoway.com.cn>
Address: 2200 Ringwood Ave San Jose, CA 95131 USA



Please scan the QR code to access additional product information:
ZUFSP Rabbit pAb