

TXLNG Rabbit pAb

CatalogNo: YN3608

Key Features

Host Species

- Rabbit

Reactivity

- Human, Mouse

Applications

- WB

MW

- 58kD (Calculated)

Isotype

- IgG

Recommended Dilution Ratios

WB 1:500-2000

Storage

Storage* -15°C to -25°C/1 year (Do not lower than -25°C)

Formulation Liquid in PBS containing 50% glycerol, 0.5% BSA and 0.02% sodium azide.

Basic Information

Clonality Polyclonal

Immunogen Information

Immunogen Synthesized peptide derived from human TXLNG AA range: 219-269

Specificity This antibody detects endogenous levels of TXLNG at Human/Mouse

Target Information

Gene name TXLNG CXorf15 ELRG LSR5

Protein Name TXLNG

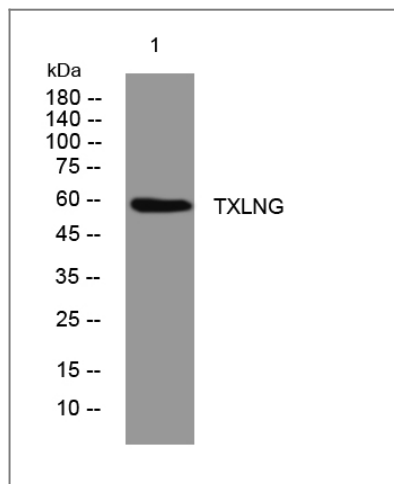
Organism	Gene ID	UniProt ID
Human	55787 ;	Q9NUQ3 ;
Mouse	353170 ;	Q8BHN1 ;

Cellular Localization Nucleus membrane . Cytoplasm, cytosol .

Tissue specificity Ubiquitously expressed. Expressed at high level in heart and skeletal muscle. Expressed in brain, placenta, lung, liver, kidney and pancreas.

Function Function:May be involved in intracellular vesicle traffic.,similarity:Belongs to the taxilin family.,subunit:Binds to the C-terminal coiled coil region of syntaxin family members STX1A, STX3A and STX4A.,tissue specificity:Ubiquitously expressed. Expressed at high level in heart and skeletal muscle. Expressed in brain, placenta, lung, liver, kidney and pancreas.,

Validation Data



Western blot analysis of lysates from PC-12 cells, primary antibody was diluted at 1:1000, 4° over night

Contact information

Orders: order.cn@immunoway.com
Support: support.cn@immunoway.com
Telephone: 400-8787-807(China)
Website: <http://www.immunoway.com.cn>
Address: 2200 Ringwood Ave San Jose, CA 95131 USA



Please scan the QR code to access additional product information:
TXLNG Rabbit pAb