

ZP3 Rabbit pAb

CatalogNo: YN3604

| Key Features

Host Species

- Rabbit

Reactivity

- Human, Mouse, Rat

Applications

- WB

MW

- 47kD (Calculated)

Isotype

- IgG

| Recommended Dilution Ratios

WB 1:500-2000

| Storage

Storage* -15°C to -25°C/1 year(Do not lower than -25°C)

Formulation Liquid in PBS containing 50% glycerol, 0.5% BSA and 0.02% sodium azide.

| Basic Information

Clonality Polyclonal

| Immunogen Information

Immunogen Synthesized peptide derived from human ZP3 AA range: 210-260

Specificity This antibody detects endogenous levels of ZP3 at Human/Mouse/Rat

| Target Information

Gene name ZP3 ZP3A ZP3B ZPC

Protein Name ZP3

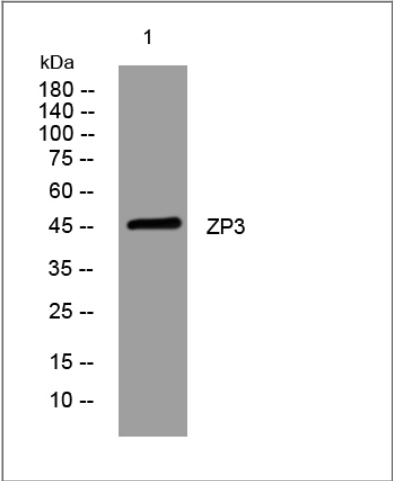
Organism	Gene ID	UniProt ID
Human	7784;	P21754;
Mouse	22788;	P10761;
Rat	114639;	P97708;

Cellular Localization [Processed zona pellucida sperm-binding protein 3]: Zona pellucida .; Cell membrane ; Single-pass type I membrane protein .

Tissue specificity Expressed in oocytes (at protein level).

Function Domain:The ZP domain is involved in the polymerization of the ZP proteins to form the zona pellucida.,Function:The mammalian zona pellucida, which mediates species-specific sperm binding, induction of the acrosome reaction and prevents post-fertilization polyspermy, is composed of three to four glycoproteins, ZP1, ZP2, ZP3, and ZP4. ZP3 is essential for sperm binding and zona matrix formation.,online information:Molecular chastity -Issue 93 of April 2008,PTM:N-glycosylated.,PTM:O-glycosylated; removal of O-linked glycans may play an important role in the post-fertilization block to polyspermy.,PTM:Proteolytically cleaved before the transmembrane segment to yield the secreted ectodomain incorporated in the zona pellucida.,similarity:Belongs to the ZP domain family. ZPC subfamily.,similarity:Contains 1 ZP domain.,subunit:Polymers of ZP2 and ZP3 organized into long filaments cross-linked by ZP1 homodimers.,tissue specificity:Oocytes.,

Validation Data



Western blot analysis of lysates from CACO2 cells, primary antibody was diluted at 1:1000, 4°over night

Contact information

Orders: order.cn@immunoway.com
Support: support.cn@immunoway.com
Telephone: 400-8787-807(China)
Website: <http://www.immunoway.com.cn>
Address: 2200 Ringwood Ave San Jose, CA 95131 USA



Please scan the QR code
to access additional
product information:
ZP3 Rabbit pAb

For Research Use Only. Not for Use in Diagnostic Procedures.

[Antibody](#) | [ELISA Kits](#) | [Protein](#) | [Reagents](#)