

## C42S2 Rabbit pAb

CatalogNo: YN3598

### Key Features

**Host Species**

- Rabbit

**Reactivity**

- Human, Mouse, Rat

**Applications**

- IHC, IF

**MW**

- 9kD (Calculated)

**Isotype**

- IgG

### Storage

**Storage\*** -15°C to -25°C/1 year (Do not lower than -25°C)**Formulation** Liquid in PBS containing 50% glycerol, 0.5% BSA and 0.02% sodium azide.

### Recommended Dilution Ratios

**IHC 1:50-200****IF 1:50-200**

### Basic Information

**Clonality** Polyclonal

### Immunogen Information

**Immunogen** Synthesized peptide derived from human C42S2 AA range: 3-53**Specificity** This antibody detects endogenous levels of C42S2 at Human/Mouse/Rat

### Target Information

**Gene name** CDC42SE2 SPEC2

**Protein Name** C42S2

Organism	Gene ID	UniProt ID
Human	<a href="#">56990</a> ;	<a href="#">Q9NRR3</a> ;
Mouse	<a href="#">72729</a> ;	<a href="#">Q8BGH7</a> ;
Rat		<a href="#">A1L1K4</a> ;

**Cellular Localization**

Cytoplasm, cytoskeleton. Cell membrane; Lipid-anchor. Cell projection, phagocytic cup. Recruited to the activated TCR prior actin polymerization. Localizes at the phagocytic cup of macrophages.

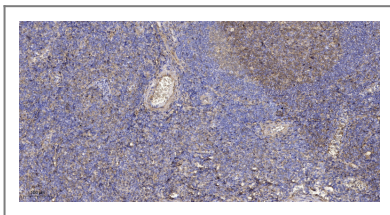
**Tissue specificity**

Widely expressed. Expressed at higher level in T-lymphocytes. Highly expressed in CCRF-CEM T-lymphocytes, Jurkat T-lymphocytes, and Raji B-lymphocytes compared (at protein level).

**Function**

Domain:The CRIB domain mediates interaction with CDC42.,Function:Probably involved in the organization of the actin cytoskeleton by acting downstream of CDC42, inducing actin filament assembly. Alters CDC42-induced cell shape changes. In activated T-cells, may play a role in CDC42-mediated F-actin accumulation at the immunological synapse. May play a role in early contractile events in phagocytosis in macrophages.,miscellaneous:CDC42SE2 is mapped in the genomic region associated with schizophrenia.,similarity:Belongs to the CDC42SE/SPEC family.,similarity:Contains 1 CRIB domain.,subcellular location:Recruited to the activated TCR prior actin polymerization. Localizes at the phagocytic cup of macrophages.,subunit:Interacts with CDC42 (in GTP-bound form). Interacts weakly with RAC1 and not at all with RHOA.,tissue specificity:Widely expressed. Expressed at higher level in T lymphocytes. Highly expressed in CCRF-CEM T lymphocytes, Jurkat T lymphocytes, and Raji B lymphocytes compared (at protein level).

## Validation Data



Immunohistochemical analysis of paraffin-embedded human tonsil. 1, Antibody was diluted at 1:200(4° overnight). 2, Tris-EDTA,pH9.0 was used for antigen retrieval. 3,Secondary antibody was diluted at 1:200(room temperature, 30min).

## Contact information

Orders: [order.cn@immunoway.com](mailto:order.cn@immunoway.com)  
Support: [support.cn@immunoway.com](mailto:support.cn@immunoway.com)  
Telephone: 400-8787-807(China)  
Website: <http://www.immunoway.com.cn>  
Address: 2200 Ringwood Ave San Jose, CA 95131 USA



Please scan the QR code to access additional product information:  
**C42S2 Rabbit pAb**

