

KR511 Rabbit pAb

CatalogNo: YN3581

| Key Features

Host Species

- Rabbit

Reactivity

- Human

Applications

- WB

MW

- 17kD (Calculated)

Isotype

- IgG

| Recommended Dilution Ratios

WB 1:500-2000

| Storage

Storage* -15°C to -25°C/1 year(Do not lower than -25°C)

Formulation Liquid in PBS containing 50% glycerol, 0.5% BSA and 0.02% sodium azide.

| Basic Information

Clonality Polyclonal

| Immunogen Information

Immunogen Synthesized peptide derived from human KR511 AA range: 49-99

Specificity This antibody detects endogenous levels of KR511 at Human

| Target Information

Gene name KRTAP5-11 KAP5.11 KRTAP5.11

Protein Name KR511

Organism

Gene ID

UniProt ID

Human

[440051;](#)

[Q6L8G4;](#)

**Cellular
Localization**

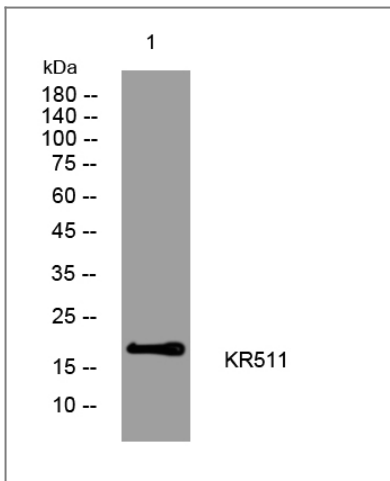
keratin filament,

Tissue specificity Restricted to hair root, not detected in any other tissues.

Function

Function:In the hair cortex, hair keratin intermediate filaments are embedded in an interfilamentous matrix, consisting of hair keratin-associated protein (KRTAP), which are essential for the formation of a rigid and resistant hair shaft through their extensive disulfide bond cross-linking with abundant cysteine residues of hair keratins. The matrix proteins include the high-sulfur and high-glycine-tyrosine keratins.,similarity:Belongs to the KRTAP type 5 family.,subunit:Interacts with hair keratins.,tissue specificity:Restricted to hair root, not detected in any other tissues.,

Validation Data



Western blot analysis of lysates from AD293 cells, primary antibody was diluted at 1:1000, 4° over night

Contact information

Orders: order.cn@immunoway.com
Support: support.cn@immunoway.com
Telephone: 400-8787-807(China)
Website: <http://www.immunoway.com.cn>
Address: 2200 Ringwood Ave San Jose, CA 95131 USA



Please scan the QR code to access additional product information:
KR511 Rabbit pAb