

## USBP1 Rabbit pAb

CatalogNo: YN3515

### | Key Features

#### Host Species

- Rabbit

#### Reactivity

- Human, Mouse, Rat

#### Applications

- WB

#### MW

- 77kD (Calculated)

#### Isotype

- IgG

### | Recommended Dilution Ratios

WB 1:500-2000

### | Storage

**Storage\*** -15°C to -25°C/1 year (Do not lower than -25°C)

**Formulation** Liquid in PBS containing 50% glycerol, 0.5% BSA and 0.02% sodium azide.

### | Basic Information

**Clonality** Polyclonal

### | Immunogen Information

**Immunogen** Synthesized peptide derived from human USBP1 AA range: 185-235

**Specificity** This antibody detects endogenous levels of USBP1 at Human/Mouse/Rat

### | Target Information

**Gene name** USHBP1 AIEBP MCC2

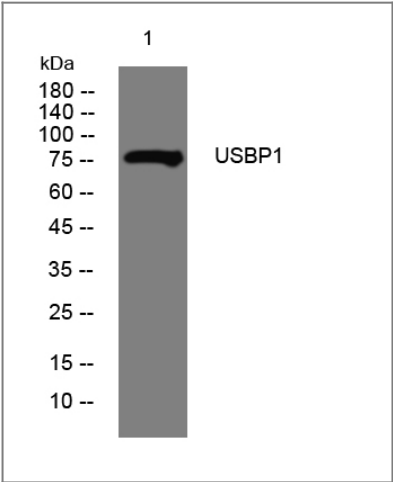
**Protein Name**      USBP1

Organism	Gene ID	UniProt ID
Human	<a href="#">83878</a> ;	<a href="#">Q8N6Y0</a> ;
Mouse	<a href="#">234395</a> ;	<a href="#">Q8R370</a> ;
Rat	<a href="#">290629</a> ;	<a href="#">Q3T1I3</a> ;

**Tissue specificity**    Highest level of expression in heart, and moderate to low expression in skeletal muscle, kidney, liver, small intestine, placenta and lung.

**Function**              similarity:Belongs to the MCC family.,subunit:Interacts via its C-terminus with the first PDZ domain of USH1C.,tissue specificity:Highest level of expression in heart, and moderate to low expression in skeletal muscle, kidney, liver, small intestine, placenta and lung.,

| Validation Data



Western blot analysis of lysates from MDA-MB cells, primary antibody was diluted at 1:1000, 4°over night

| Contact information

Orders:            order.cn@immunoway.com  
Support:          support.cn@immunoway.com  
Telephone:        400-8787-807(China)  
Website:          http://www.immunoway.com.cn  
Address:          2200 Ringwood Ave San Jose, CA 95131 USA



Please scan the QR code to access additional product information:  
**USBP1 Rabbit pAb**