

CF122 Rabbit pAb

CatalogNo: YN3498

| Key Features

Host Species

- Rabbit

Reactivity

- Human

Applications

- WB

MW

- 23kD (Calculated)

Isotype

- IgG

| Recommended Dilution Ratios

WB 1:500-2000

| Storage

Storage* -15°C to -25°C/1 year(Do not lower than -25°C)

Formulation Liquid in PBS containing 50% glycerol, 0.5% BSA and 0.02% sodium azide.

| Basic Information

Clonality Polyclonal

| Immunogen Information

Immunogen Synthesized peptide derived from human CF122 AA range: 125-175

Specificity This antibody detects endogenous levels of CF122 at Human

| Target Information

Gene name LINC00242 C6orf122 NCRNA00242

Protein Name CF122

Organism

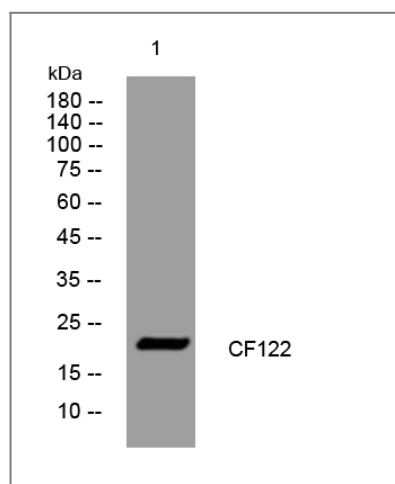
Gene ID

UniProt ID

Human

[Q5T6M2](#);

Validation Data



Western blot analysis of lysates from U2OS cells, primary antibody was diluted at 1:1000, 4° over night

Contact information

Orders: order.cn@immunoway.com
Support: support.cn@immunoway.com
Telephone: 400-8787-807(China)
Website: <http://www.immunoway.com.cn>
Address: 2200 Ringwood Ave San Jose, CA 95131 USA



Please scan the QR code to access additional product information:
CF122 Rabbit pAb

For Research Use Only. Not for Use in Diagnostic Procedures.

[Antibody](#) | [ELISA Kits](#) | [Protein](#) | [Reagents](#)