

K1456 Rabbit pAb

CatalogNo: YN3441

| Key Features

Host Species

- Rabbit

Reactivity

- Human, Mouse

Applications

- WB

MW

- 50kD (Calculated)

Isotype

- IgG

| Recommended Dilution Ratios

WB 1:500-2000

| Storage

Storage* -15°C to -25°C/1 year (Do not lower than -25°C)

Formulation Liquid in PBS containing 50% glycerol, 0.5% BSA and 0.02% sodium azide.

| Basic Information

Clonality Polyclonal

| Immunogen Information

Immunogen Synthesized peptide derived from human K1456 AA range: 140-190

Specificity This antibody detects endogenous levels of K1456 at Human/Mouse

| Target Information

Gene name KIAA1456 C8orf79

Protein Name K1456

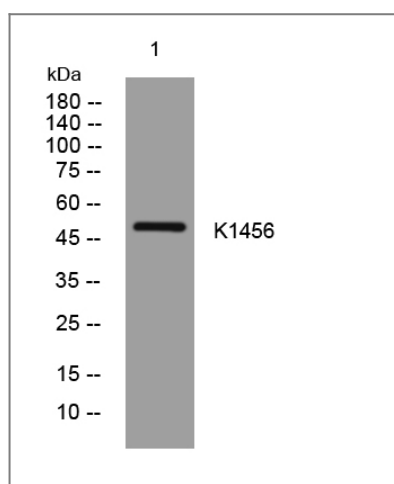
Organism	Gene ID	UniProt ID
Human	57604 ;	Q9P272 ;
Mouse	319582 ;	Q80WQ4 ;

Cellular Localization nucleus,cytoplasm,

Tissue specificity Down-regulated in breast, bladder, colorectal, cervix and testicular carcinomas.

Function similarity:Belongs to the methyltransferase superfamily.,

Validation Data



Western blot analysis of lysates from MCF-7 cells, primary antibody was diluted at 1:1000, 4° over night

Contact information

Orders: order.cn@immunoway.com
Support: support.cn@immunoway.com
Telephone: 400-8787-807(China)
Website: <http://www.immunoway.com.cn>
Address: 2200 Ringwood Ave San Jose, CA 95131 USA



Please scan the QR code to access additional product information:
K1456 Rabbit pAb