

## LPP3 Rabbit pAb

CatalogNo: YN3435

### | Key Features

#### Host Species

- Rabbit

#### Reactivity

- Human, Mouse, Rat

#### Applications

- WB

#### MW

- 34kD (Calculated)

#### Isotype

- IgG

### | Recommended Dilution Ratios

WB 1:500-2000

### | Storage

**Storage\*** -15°C to -25°C/1 year (Do not lower than -25°C)

**Formulation** Liquid in PBS containing 50% glycerol, 0.5% BSA and 0.02% sodium azide.

### | Basic Information

**Clonality** Polyclonal

### | Immunogen Information

**Immunogen** Synthesized peptide derived from human LPP3 AA range: 205-255

**Specificity** This antibody detects endogenous levels of LPP3 at Human/Mouse/Rat

### | Target Information

**Gene name** PPAP2B LPP3

Protein Name LPP3

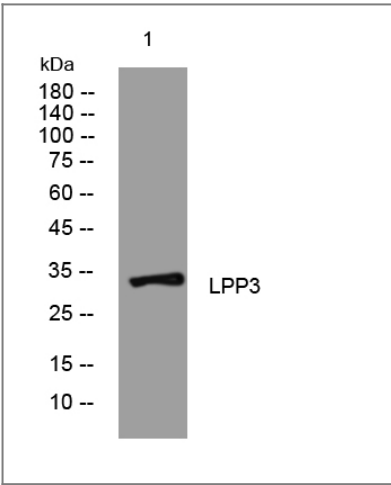
Organism	Gene ID	UniProt ID
Human	<a href="#">8613</a> ;	<a href="#">O14495</a> ;
Mouse	<a href="#">67916</a> ;	<a href="#">Q99JY8</a> ;
Rat		<a href="#">P97544</a> ;

**Cellular Localization** Cell membrane ; Multi-pass membrane protein . Basolateral cell membrane ; Multi-pass membrane protein . Endoplasmic reticulum membrane ; Multi-pass membrane protein . Endoplasmic reticulum-Golgi intermediate compartment membrane ; Multi-pass membrane protein . Golgi apparatus membrane ; Multi-pass membrane protein . Golgi apparatus, trans-Golgi network membrane ; Multi-pass membrane protein . Membrane raft ; Multi-pass membrane protein . Cycles between the endoplasmic reticulum and the Golgi. .

**Tissue specificity** Ubiquitously expressed (PubMed:9305923, PubMed:12660161). Highly expressed in heart and placenta (PubMed:9305923).

**Function** Catalytic activity:A 3-sn-phosphatidate + H(2)O = a 1,2-diacyl-sn-glycerol + phosphate.,enzyme regulation:Inhibited by sphingosine, zinc ions and propanolol. Not inhibited by N-ethylmaleimide treatment.,Function:Catalyzes the conversion of phosphatidic acid (PA) to diacylglycerol (DG). In addition it hydrolyzes lysophosphatidic acid (LPA), ceramide-1-phosphate (C-1-P) and sphingosine-1-phosphate (S-1-P). The relative catalytic efficiency is LPA = PA > C-1-P > S-1-P. May be involved in cell adhesion and in cell-cell interactions.,induction:By epidermal growth factor (EGF), vascular endothelial growth factor (VEGF), basic fibroblast growth factor (bFGF) and phorbol myristate acetate (PMA).,PTM:N-glycosylated. Contains high-mannose oligosaccharides.,similarity:Belongs to the PA-phosphatase related phosphoesterase family.,subunit:Homodimer. This complex seems not to be involved in substrate recognition, it may confer only structural or functional stability.,tissue specificity:Ubiquitously expressed. Highly expressed in heart and placenta.,

Validation Data



Western blot analysis of lysates from SW480 cells, primary antibody was diluted at 1:1000, 4°over night

Contact information

Orders: order.cn@immunoway.com  
Support: support.cn@immunoway.com  
Telephone: 400-8787-807(China)  
Website: <http://www.immunoway.com.cn>  
Address: 2200 Ringwood Ave San Jose, CA 95131 USA



Please scan the QR code  
to access additional  
product information:  
**LPP3 Rabbit pAb**

---

For Research Use Only. Not for Use in Diagnostic Procedures.

[Antibody](#) | [ELISA Kits](#) | [Protein](#) | [Reagents](#)